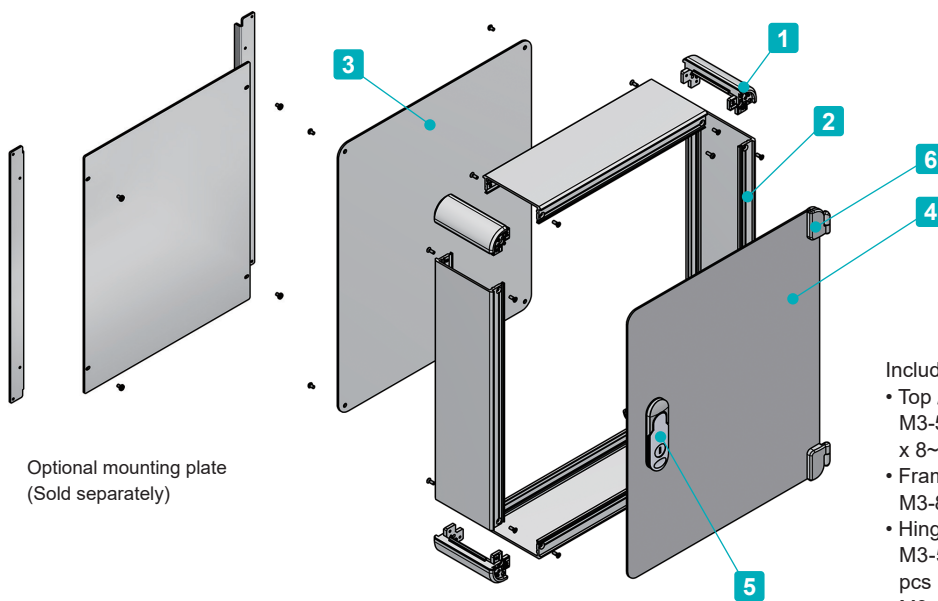




- Aluminium enclosure with opening/closing cover for easy access to the inside of the case.
- Flat handle is available in 2 configurations: Normal "N" type, and Key Lock "K" type.
- A large selection of 112 different sizes in 2 different colors to choose from.
- Suitable for use as industrial control panel, machine controller, audio amplifier, power supply, and others.



Optional mounting plate  
(Sold separately)

Included screws

- Top / Bottom cover  
M3-5 original trapezoid head & Nickel plated x 8~16 pcs
- Frame  
M3-8 flat head & Nickel plated x 16 pcs
- Hinge  
M3-5 flat head & Trivalent chromate x 2~3 pcs  
M3 pan head & Trivalent chromate x 2~3 pcs

Recommended torque : 0.3 ~ 0.6N • m

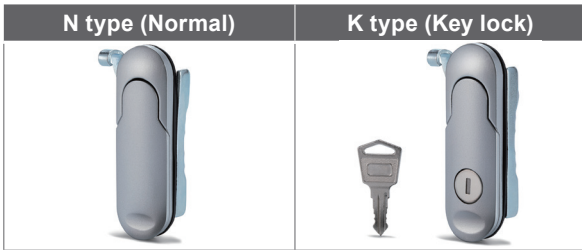
\* Recommended torque listed is for reference only; actual may differ. Assemble after testing torque.

Components

No.	Part name	Pcs	Material	Color / Finish
1	Corner block	4	Diecast aluminium ADC12	Silver / Black Painted (Unfinished inside)
2	Frame	4	Extruded aluminium A6063S-T5	Silver / Anodized
3	Screwed panel	1	Aluminium A1100P	Silver / Anodized
4	Open-closing panel	1	Aluminium A1100P	Silver / Anodized
5	Flat handle (Key lock / Normal)	1 set	Diecast zinc	Silver / Painted
6	Hinge	1 set	Diecast zinc	Silver / Painted

To select Flat handle and Color, follow steps **1** ~ **2** below to determine product number.

**1 Flat handle (Normal / Key lock)**



**2 Color**



**Product Number**

To determine a product number, fill H-W-D dimensions and select Flat handle and Color code in the following blank boxes.

**AUH**  -  -

**H-W-D dimensions**

See page AUH-3 and 4 for dimensions / product no.

**Handle**  
(N or K)

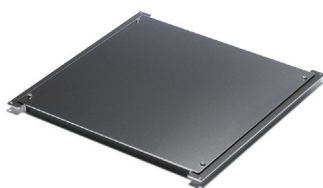
**Color**  
(SS or SB)

**Numbering example :**

"H88 x W430 x D300mm, Normal Flat handle, SB Color"

➔ **AUH 88-43-30 NSB**

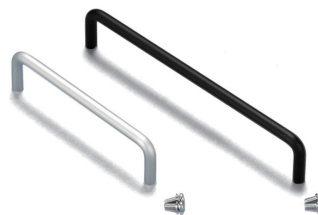
**Accessories (Optional parts)**



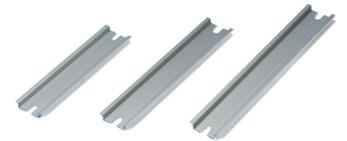
Mounting plate AUC series  
See page 179 ~ 180



Adhesive panel protection pad  
See page AUH-4



Aluminium handle OH series  
See page BH • Z-P-1



DIN rail FDR series  
See page FDR-1



Wall mount support arm MAR series  
See page 181 ~ 182

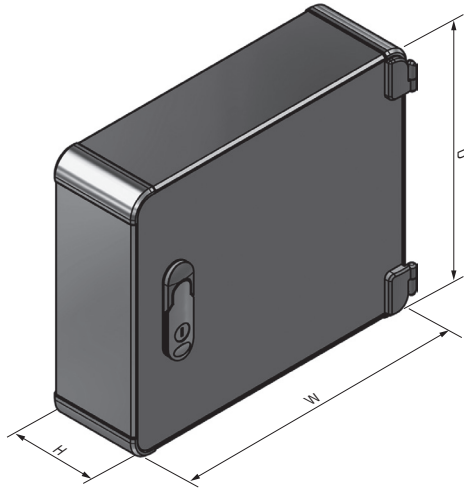
**AUH dimensions**

■ DXF/DWG/PDF/STP drawings available on our website.

1x Flat handle, 2 x Hinge models

Applicable for models other than

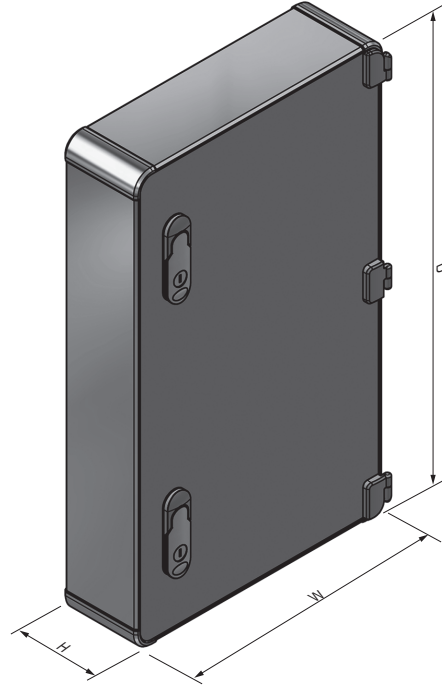
AUH□-30-50, □-36-50, □-36-60, □-43-50, □-43-60.



2 x Flat handle, 3 x Hinge models

Applicable for

AUH□-30-50, □-36-50, □-36-60, □-43-50, □-43-60.



**Product no. / Details**

■ Please suffix handle and color code at the end of the product number.

Product no.	H	W	D	Weight (kg)	Handle / Hinge qty
AUH66-16-20□□□	66	160	200	1.2	1 / 2
AUH66-16-25□□□	66	160	250	1.4	1 / 2
AUH66-16-30□□□	66	160	300	1.5	1 / 2
AUH66-20-20□□□	66	200	200	1.3	1 / 2
AUH66-20-25□□□	66	200	250	1.5	1 / 2
AUH66-20-30□□□	66	200	300	1.7	1 / 2
AUH66-20-36□□□	66	200	360	1.9	1 / 2
AUH66-25-25□□□	66	250	250	1.7	1 / 2
AUH66-25-30□□□	66	250	300	1.9	1 / 2
AUH66-25-36□□□	66	250	360	2.2	1 / 2
AUH66-25-43□□□	66	250	430	2.5	1 / 2
AUH66-30-20□□□	66	300	200	1.7	1 / 2
AUH66-30-25□□□	66	300	250	1.9	1 / 2
AUH66-30-30□□□	66	300	300	2.2	1 / 2
AUH66-30-36□□□	66	300	360	2.4	1 / 2
AUH66-30-43□□□	66	300	430	2.8	1 / 2
AUH66-30-50□□□	66	300	500	3.3	2 / 3
AUH66-36-25□□□	66	360	250	2.2	1 / 2
AUH66-36-30□□□	66	360	300	2.4	1 / 2
AUH66-36-36□□□	66	360	360	2.7	1 / 2
AUH66-36-43□□□	66	360	430	3.1	1 / 2
AUH66-36-50□□□	66	360	500	3.7	2 / 3
AUH66-36-60□□□	66	360	600	4.2	2 / 3
AUH66-43-30□□□	66	430	300	2.8	1 / 2
AUH66-43-36□□□	66	430	360	3.1	1 / 2
AUH66-43-43□□□	66	430	430	3.5	1 / 2
AUH66-43-50□□□	66	430	500	4.1	2 / 3
AUH66-43-60□□□	66	430	600	4.7	2 / 3

Product no.	H	W	D	Weight (kg)	Handle / Hinge qty
AUH88-16-20□□□	88	160	200	1.3	1 / 2
AUH88-16-25□□□	88	160	250	1.5	1 / 2
AUH88-16-30□□□	88	160	300	1.7	1 / 2
AUH88-20-20□□□	88	200	200	1.5	1 / 2
AUH88-20-25□□□	88	200	250	1.7	1 / 2
AUH88-20-30□□□	88	200	300	1.9	1 / 2
AUH88-20-36□□□	88	200	360	2.1	1 / 2
AUH88-25-25□□□	88	250	250	1.9	1 / 2
AUH88-25-30□□□	88	250	300	2.1	1 / 2
AUH88-25-36□□□	88	250	360	2.4	1 / 2
AUH88-25-43□□□	88	250	430	2.7	1 / 2
AUH88-30-20□□□	88	300	200	1.9	1 / 2
AUH88-30-25□□□	88	300	250	2.1	1 / 2
AUH88-30-30□□□	88	300	300	2.4	1 / 2
AUH88-30-36□□□	88	300	360	2.6	1 / 2
AUH88-30-43□□□	88	300	430	3.0	1 / 2
AUH88-30-50□□□	88	300	500	3.5	2 / 3
AUH88-36-25□□□	88	360	250	2.4	1 / 2
AUH88-36-30□□□	88	360	300	2.6	1 / 2
AUH88-36-36□□□	88	360	360	3.0	1 / 2
AUH88-36-43□□□	88	360	430	3.4	1 / 2
AUH88-36-50□□□	88	360	500	3.9	2 / 3
AUH88-36-60□□□	88	360	600	4.5	2 / 3
AUH88-43-30□□□	88	430	300	3.0	1 / 2
AUH88-43-36□□□	88	430	360	3.4	1 / 2
AUH88-43-43□□□	88	430	430	3.8	1 / 2
AUH88-43-50□□□	88	430	500	4.4	2 / 3
AUH88-43-60□□□	88	430	600	5.1	2 / 3

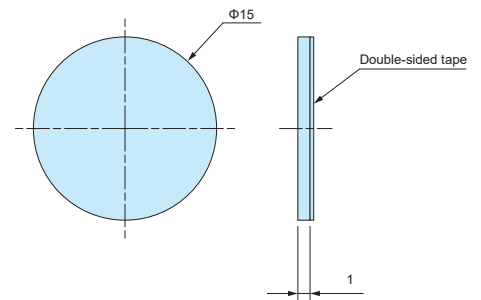
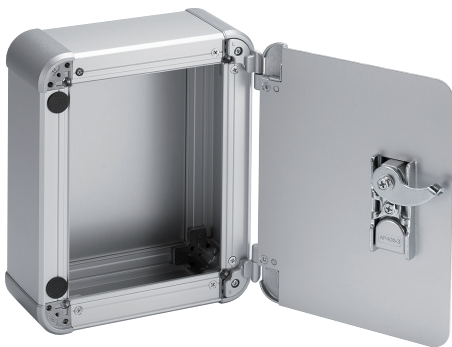
**Product no. / Details**

■ Please suffix handle and color code at the end of the product number.

Product no.	H	W	D	Weight (kg)	Handle / Hinge qty
AUH133-16-20□□□	132.5	160	200	1.7	1 / 2
AUH133-16-25□□□	132.5	160	250	1.9	1 / 2
AUH133-16-30□□□	132.5	160	300	2.1	1 / 2
AUH133-20-20□□□	132.5	200	200	1.8	1 / 2
AUH133-20-25□□□	132.5	200	250	2.1	1 / 2
AUH133-20-30□□□	132.5	200	300	2.3	1 / 2
AUH133-20-36□□□	132.5	200	360	2.6	1 / 2
AUH133-25-25□□□	132.5	250	250	2.4	1 / 2
AUH133-25-30□□□	132.5	250	300	2.6	1 / 2
AUH133-25-36□□□	132.5	250	360	2.9	1 / 2
AUH133-25-43□□□	132.5	250	430	3.3	1 / 2
AUH133-30-20□□□	132.5	300	200	2.3	1 / 2
AUH133-30-25□□□	132.5	300	250	2.6	1 / 2
AUH133-30-30□□□	132.5	300	300	2.9	1 / 2
AUH133-30-36□□□	132.5	300	360	3.3	1 / 2
AUH133-30-43□□□	132.5	300	430	3.7	1 / 2
AUH133-30-50□□□	132.5	300	500	4.2	2 / 3
AUH133-36-25□□□	132.5	360	250	2.9	1 / 2
AUH133-36-30□□□	132.5	360	300	3.3	1 / 2
AUH133-36-36□□□	132.5	360	360	3.6	1 / 2
AUH133-36-43□□□	132.5	360	430	4.1	1 / 2
AUH133-36-50□□□	132.5	360	500	4.7	2 / 3
AUH133-36-60□□□	132.5	360	600	5.4	2 / 3
AUH133-43-30□□□	132.5	430	300	3.7	1 / 2
AUH133-43-36□□□	132.5	430	360	4.1	1 / 2
AUH133-43-43□□□	132.5	430	430	4.6	1 / 2
AUH133-43-50□□□	132.5	430	500	5.3	2 / 3
AUH133-43-60□□□	132.5	430	600	6.0	2 / 3

Product no.	H	W	D	Weight (kg)	Handle / Hinge qty
AUH177-16-20□□□	177	160	200	1.9	1 / 2
AUH177-16-25□□□	177	160	250	2.1	1 / 2
AUH177-16-30□□□	177	160	300	2.4	1 / 2
AUH177-20-20□□□	177	200	200	2.1	1 / 2
AUH177-20-25□□□	177	200	250	2.4	1 / 2
AUH177-20-30□□□	177	200	300	2.6	1 / 2
AUH177-20-36□□□	177	200	360	3.0	1 / 2
AUH177-25-25□□□	177	250	250	2.7	1 / 2
AUH177-25-30□□□	177	250	300	3.0	1 / 2
AUH177-25-36□□□	177	250	360	3.3	1 / 2
AUH177-25-43□□□	177	250	430	3.7	1 / 2
AUH177-30-20□□□	177	300	200	2.6	1 / 2
AUH177-30-25□□□	177	300	250	3.0	1 / 2
AUH177-30-30□□□	177	300	300	3.3	1 / 2
AUH177-30-36□□□	177	300	360	3.7	1 / 2
AUH177-30-43□□□	177	300	430	4.1	1 / 2
AUH177-30-50□□□	177	300	500	4.8	2 / 3
AUH177-36-25□□□	177	360	250	3.3	1 / 2
AUH177-36-30□□□	177	360	300	3.7	1 / 2
AUH177-36-36□□□	177	360	360	4.1	1 / 2
AUH177-36-43□□□	177	360	430	4.6	1 / 2
AUH177-36-50□□□	177	360	500	5.3	2 / 3
AUH177-36-60□□□	177	360	600	6.0	2 / 3
AUH177-43-30□□□	177	430	300	4.1	1 / 2
AUH177-43-36□□□	177	430	360	4.6	1 / 2
AUH177-43-43□□□	177	430	430	5.2	1 / 2
AUH177-43-50□□□	177	430	500	5.9	2 / 3
AUH177-43-60□□□	177	430	600	6.7	2 / 3

**ACP-15 ADHESIVE PANEL PROTECTION PAD** ★ ★ NEW



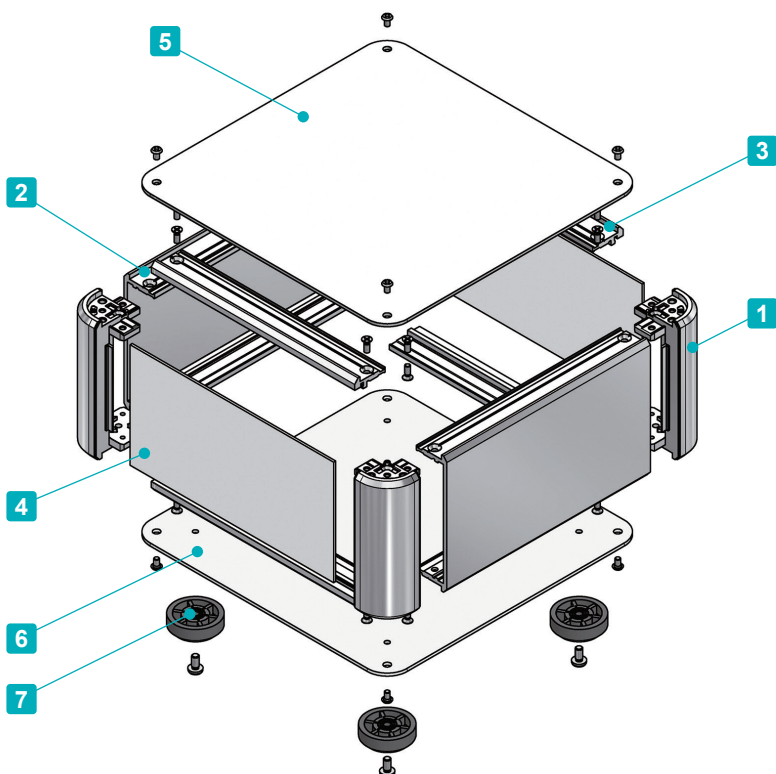
■ Adhesive shock absorbing cushion for AUH series. Can be attached to the contact surface between the open-closing panel and the frame.

**Product no. / Details**

Product no.	Material	Color	Pack of
ACP-15	Polyolefin foam	Black	3



- Elegantly designed aluminium enclosure with front/rear panels.
- A large selection of 177 different sizes to choose from.
- Top/bottom covers and front/rear panels are made from easily customizable sheet aluminium material.
- Versatile aluminium enclosure suitable for use as measuring instrument, controller, industrial embedded computer, power supply, audio amplifier, and so on.
- Feet is selectable between rubber or aluminium type.

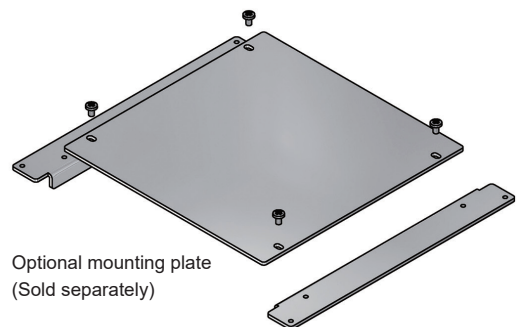


Included screws

- Top / Bottom cover  
M3-5 original trapezoid head (plus / hex) & Nickel plated / Black trivalent chromate x 8~16 pcs
- Frame / Panel support frame  
M3-8 flat head & Nickel plated x 16 pcs
- Rubber feet / Aluminium feet  
M4-8 bind head & Black trivalent chromate x 4 pcs

Recommended torque : 0.3 ~ 0.6N • m

\* Recommended torque listed is for reference only; actual may differ. Assemble after testing torque.



Optional mounting plate  
(Sold separately)

Components

No.	Part name	Pcs	Material	Color / Finish
1	Corner block	4	Diecast aluminium ADC12	Silver • Black / Painted (Unfinished inside)
2	Frame	2	Extruded aluminium A6063S-T5	Silver • Black / Anodized
3	Panel support frame	4	Extruded aluminium A6063S-T5	Silver • Black / Anodized
4	Panel	2	Aluminium A1100P	Silver • Black / Anodized
5	Top cover	1	Aluminium A1100P	Silver • Black / Anodized
6	Bottom cover	1	Aluminium A1100P	Silver • Black / Anodized
7	Rubber feet : Aluminium feet	4	TPE (Elastomer) : Aluminium	Black : Silver • Black / Anodized

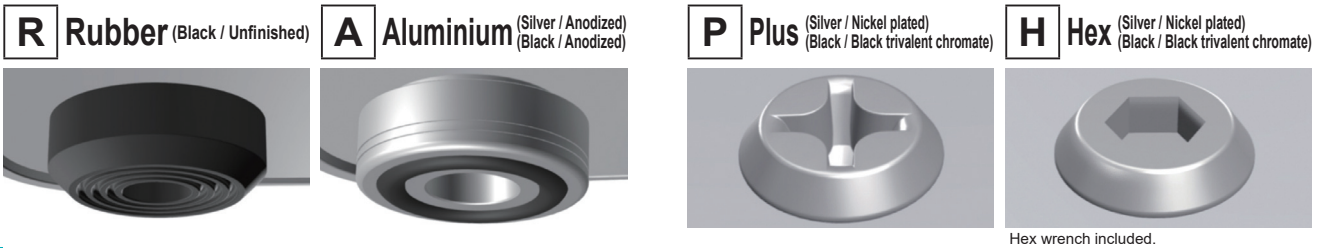
To select Feet, Screw, and Color, follow steps 1 ~ 3 to determine product number.

1 Feet

\*Color of "Aluminium Feet" will be the same as bottom cover color.

2 Screw

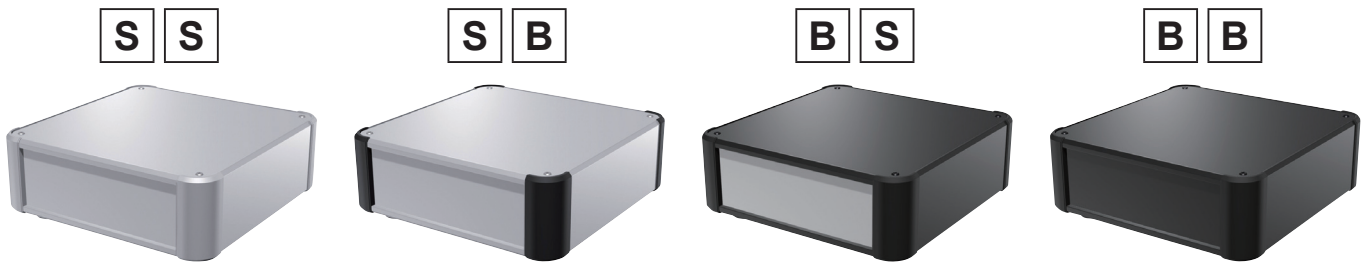
\*Color of screw will be the same as top • bottom cover color.



Hex wrench included.

3 Color

Please choose from the color combinations listed below.



Product Number

To determine a product number, fill H-W-D dimensions and select Feet, Screw, and Color code in the following blank boxes.

AU  -  -       -     

H-W-D dimensions    1 Feet    2 Screw    3 Color

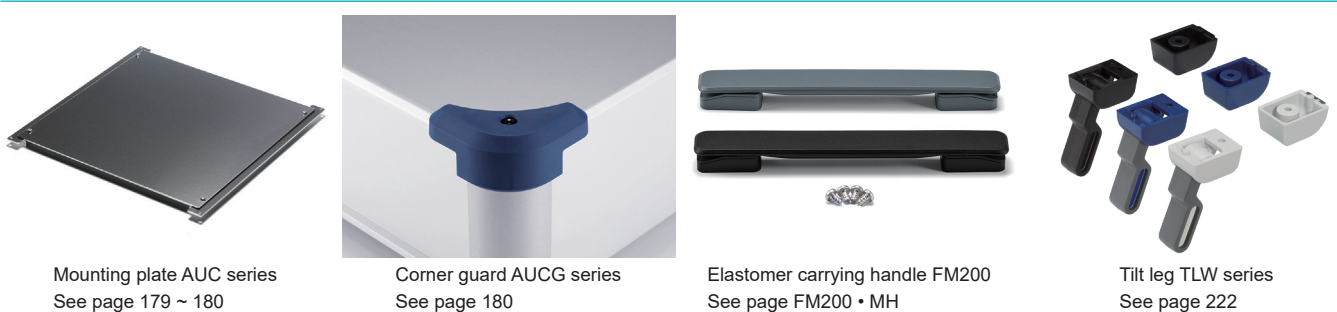
See page 153~154 for dimensions and product no. R or A    P or H    SS • SB • BS • BB

Numbering example :

If looking at "H88 x W300 x D200mm, Feet type A, Screw type H, Color type BS"

➔ AU 88-30-20 AH-BS

Accessories (Optional parts)



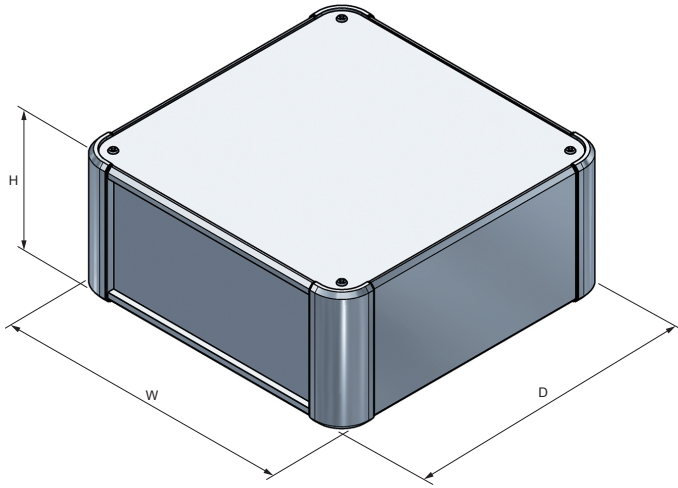
Mounting plate AUC series  
See page 179 ~ 180

Corner guard AUCG series  
See page 180

Elastomer carrying handle FM200  
See page FM200 • MH

Tilt leg TLW series  
See page 222

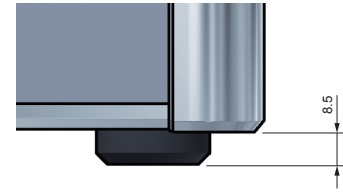
AU dimensions



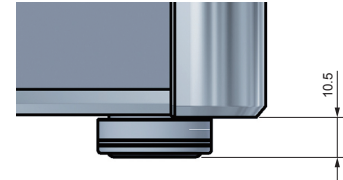
■ DXF/DWG/PDF/STP drawings available on our website.

■ Feet is selectable between rubber or aluminium type.  
 ※Rubber and aluminium feet height are different.

Rubber Feet



Aluminium Feet



Product no. / Details

■ Please suffix color code at the end of the product number.

Product no.	H	W	D	Weight (kg)
NEW AU 44-16-16□□-□□	44	160	160	0.7
NEW AU 44-16-20□□-□□	44	160	200	0.8
NEW AU 44-16-25□□-□□	44	160	250	1.0
NEW AU 44-16-30□□-□□	44	160	300	1.1
NEW AU 44-16-36□□-□□	44	160	360	1.3
NEW AU 44-16-43□□-□□	44	160	430	1.5
NEW AU 44-20-16□□-□□	44	200	160	0.8
NEW AU 44-20-20□□-□□	44	200	200	0.9
NEW AU 44-20-25□□-□□	44	200	250	1.1
NEW AU 44-20-30□□-□□	44	200	300	1.3
NEW AU 44-20-36□□-□□	44	200	360	1.5
NEW AU 44-20-43□□-□□	44	200	430	1.7
NEW AU 44-25-16□□-□□	44	250	160	1.0
NEW AU 44-25-20□□-□□	44	250	200	1.1
NEW AU 44-25-25□□-□□	44	250	250	1.3
NEW AU 44-25-30□□-□□	44	250	300	1.5
NEW AU 44-25-36□□-□□	44	250	360	1.7
NEW AU 44-25-43□□-□□	44	250	430	2.0
NEW AU 44-30-16□□-□□	44	300	160	1.1
NEW AU 44-30-20□□-□□	44	300	200	1.3
NEW AU 44-30-25□□-□□	44	300	250	1.5
NEW AU 44-30-30□□-□□	44	300	300	1.7
NEW AU 44-30-36□□-□□	44	300	360	2.0
NEW AU 44-30-43□□-□□	44	300	430	2.3
NEW AU 44-30-50□□-□□	44	300	500	2.6
NEW AU 44-36-16□□-□□	44	360	160	1.3
NEW AU 44-36-20□□-□□	44	360	200	1.5
NEW AU 44-36-25□□-□□	44	360	250	1.7
NEW AU 44-36-30□□-□□	44	360	300	2.0
NEW AU 44-36-36□□-□□	44	360	360	2.2
NEW AU 44-36-43□□-□□	44	360	430	2.6
NEW AU 44-36-50□□-□□	44	360	500	3.0
NEW AU 44-43-16□□-□□	44	430	160	1.5
NEW AU 44-43-20□□-□□	44	430	200	1.7
NEW AU 44-43-25□□-□□	44	430	250	2.0
NEW AU 44-43-30□□-□□	44	430	300	2.3
NEW AU 44-43-36□□-□□	44	430	360	2.6
NEW AU 44-43-43□□-□□	44	430	430	3.0
NEW AU 44-43-50□□-□□	44	430	500	3.4
NEW AU 44-50-30□□-□□	44	500	300	2.6
NEW AU 44-50-36□□-□□	44	500	360	3.0
NEW AU 44-50-43□□-□□	44	500	430	3.4
NEW AU 44-50-50□□-□□	44	500	500	3.9

Product no.	H	W	D	Weight (kg)
AU 66-16-16□□-□□	66	160	160	0.9
AU 66-16-20□□-□□	66	160	200	1.0
AU 66-16-25□□-□□	66	160	250	1.2
AU 66-16-30□□-□□	66	160	300	1.3
NEW AU 66-16-36□□-□□	66	160	360	1.5
NEW AU 66-16-43□□-□□	66	160	430	1.7
AU 66-20-16□□-□□	66	200	160	1.0
AU 66-20-20□□-□□	66	200	200	1.1
AU 66-20-25□□-□□	66	200	250	1.3
AU 66-20-30□□-□□	66	200	300	1.5
AU 66-20-36□□-□□	66	200	360	1.7
AU 66-20-43□□-□□	66	200	430	2.0
AU 66-25-16□□-□□	66	250	160	1.1
AU 66-25-20□□-□□	66	250	200	1.3
AU 66-25-25□□-□□	66	250	250	1.5
AU 66-25-30□□-□□	66	250	300	1.7
AU 66-25-36□□-□□	66	250	360	2.0
AU 66-25-43□□-□□	66	250	430	2.3
AU 66-30-16□□-□□	66	300	160	1.3
AU 66-30-20□□-□□	66	300	200	1.5
AU 66-30-25□□-□□	66	300	250	1.7
AU 66-30-30□□-□□	66	300	300	1.9
AU 66-30-36□□-□□	66	300	360	2.2
AU 66-30-43□□-□□	66	300	430	2.6
AU 66-30-50□□-□□	66	300	500	2.9
NEW AU 66-36-16□□-□□	66	360	160	1.5
AU 66-36-20□□-□□	66	360	200	1.7
AU 66-36-25□□-□□	66	360	250	1.9
AU 66-36-30□□-□□	66	360	300	2.2
AU 66-36-36□□-□□	66	360	360	2.5
AU 66-36-43□□-□□	66	360	430	2.9
AU 66-36-50□□-□□	66	360	500	3.3
NEW AU 66-43-16□□-□□	66	430	160	1.7
AU 66-43-20□□-□□	66	430	200	1.9
AU 66-43-25□□-□□	66	430	250	2.2
AU 66-43-30□□-□□	66	430	300	2.5
AU 66-43-36□□-□□	66	430	360	2.9
AU 66-43-43□□-□□	66	430	430	3.3
AU 66-43-50□□-□□	66	430	500	3.7
AU 66-50-30□□-□□	66	500	300	2.8
AU 66-50-36□□-□□	66	500	360	3.3
AU 66-50-43□□-□□	66	500	430	3.7
AU 66-50-50□□-□□	66	500	500	4.2

Product no. / Details

■ Please suffix color code at the end of the product number.

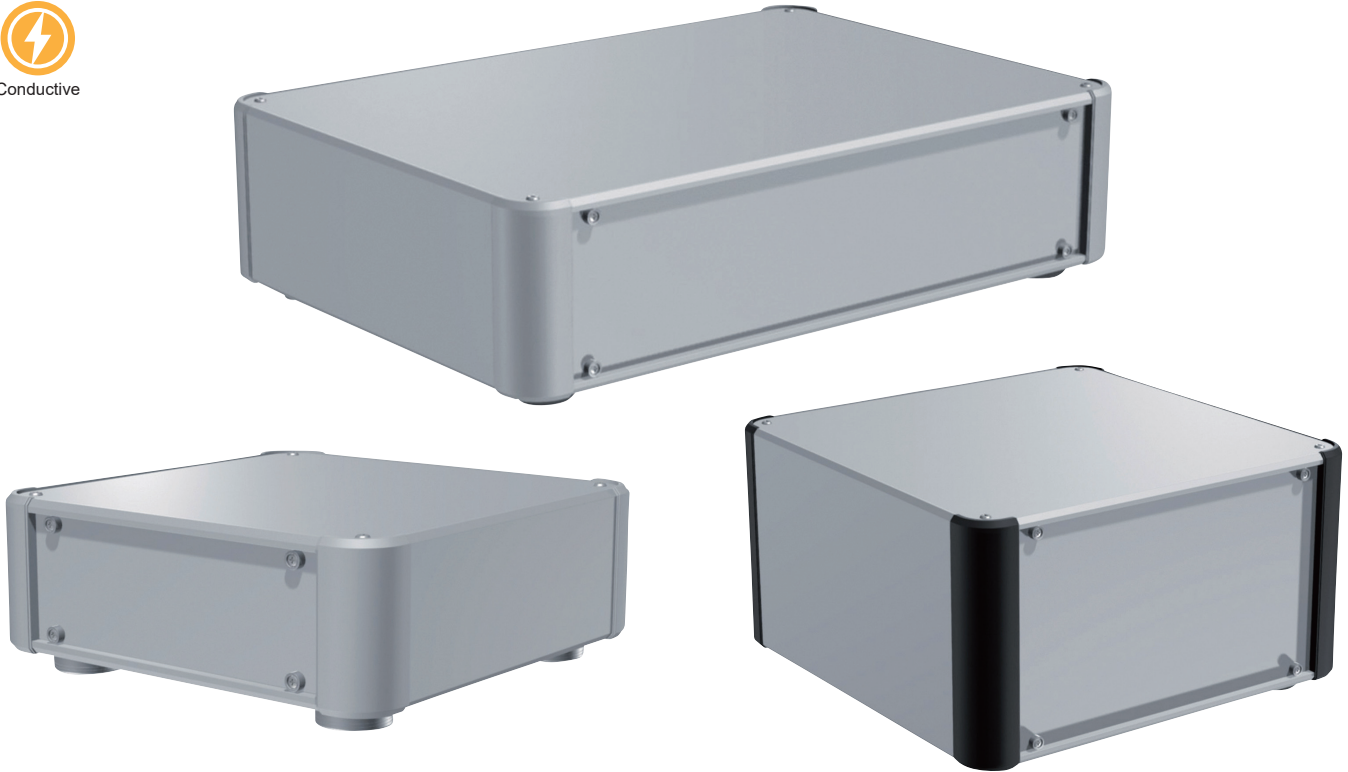
Product no.	H	W	D	Weight (kg)
AU 88-16-16□□-□□	88	160	160	0.9
AU 88-16-20□□-□□	88	160	200	1.1
AU 88-16-25□□-□□	88	160	250	1.3
AU 88-16-30□□-□□	88	160	300	1.4
<b>NEW</b> AU 88-16-36□□-□□	88	160	360	1.7
<b>NEW</b> AU 88-16-43□□-□□	88	160	430	1.9
AU 88-20-16□□-□□	88	200	160	1.1
AU 88-20-20□□-□□	88	200	200	1.2
AU 88-20-25□□-□□	88	200	250	1.4
AU 88-20-30□□-□□	88	200	300	1.6
AU 88-20-36□□-□□	88	200	360	1.8
AU 88-20-43□□-□□	88	200	430	2.1
AU 88-25-16□□-□□	88	250	160	1.2
AU 88-25-20□□-□□	88	250	200	1.4
AU 88-25-25□□-□□	88	250	250	1.6
AU 88-25-30□□-□□	88	250	300	1.8
AU 88-25-36□□-□□	88	250	360	2.1
AU 88-25-43□□-□□	88	250	430	2.4
AU 88-30-16□□-□□	88	300	160	1.4
AU 88-30-20□□-□□	88	300	200	1.6
AU 88-30-25□□-□□	88	300	250	1.8
AU 88-30-30□□-□□	88	300	300	2.1
AU 88-30-36□□-□□	88	300	360	2.4
AU 88-30-43□□-□□	88	300	430	2.7
AU 88-30-50□□-□□	88	300	500	3.1
<b>NEW</b> AU 88-36-16□□-□□	88	360	160	1.6
AU 88-36-20□□-□□	88	360	200	1.8
AU 88-36-25□□-□□	88	360	250	2.1
AU 88-36-30□□-□□	88	360	300	2.3
AU 88-36-36□□-□□	88	360	360	2.7
AU 88-36-43□□-□□	88	360	430	3.1
AU 88-36-50□□-□□	88	360	500	3.5
<b>NEW</b> AU 88-43-16□□-□□	88	430	160	1.8
AU 88-43-20□□-□□	88	430	200	2.1
AU 88-43-25□□-□□	88	430	250	2.4
AU 88-43-30□□-□□	88	430	300	2.7
AU 88-43-36□□-□□	88	430	360	3.1
AU 88-43-43□□-□□	88	430	430	3.5
AU 88-43-50□□-□□	88	430	500	4.0
AU 88-50-30□□-□□	88	500	300	3.0
AU 88-50-36□□-□□	88	500	360	3.4
AU 88-50-43□□-□□	88	500	430	3.9
AU 88-50-50□□-□□	88	500	500	4.4
AU133-16-16□□-□□	132.5	160	160	1.2
AU133-16-20□□-□□	132.5	160	200	1.4
AU133-16-25□□-□□	132.5	160	250	1.6
AU133-16-30□□-□□	132.5	160	300	1.8
<b>NEW</b> AU133-16-36□□-□□	132.5	160	360	2.1
<b>NEW</b> AU133-16-43□□-□□	132.5	160	430	2.4
AU133-20-16□□-□□	132.5	200	160	1.3
AU133-20-20□□-□□	132.5	200	200	1.5
AU133-20-25□□-□□	132.5	200	250	1.7
AU133-20-30□□-□□	132.5	200	300	2.0
AU133-20-36□□-□□	132.5	200	360	2.3
AU133-20-43□□-□□	132.5	200	430	2.6
AU133-25-16□□-□□	132.5	250	160	1.5
AU133-25-20□□-□□	132.5	250	200	1.7
AU133-25-25□□-□□	132.5	250	250	2.0
AU133-25-30□□-□□	132.5	250	300	2.2
AU133-25-36□□-□□	132.5	250	360	2.6
AU133-25-43□□-□□	132.5	250	430	3.0
AU133-30-16□□-□□	132.5	300	160	1.7
AU133-30-20□□-□□	132.5	300	200	1.9
AU133-30-25□□-□□	132.5	300	250	2.2
AU133-30-30□□-□□	132.5	300	300	2.5
AU133-30-36□□-□□	132.5	300	360	2.9
AU133-30-43□□-□□	132.5	300	430	3.3
AU133-30-50□□-□□	132.5	300	500	3.9
AU133-36-16□□-□□	132.5	360	160	1.9
AU133-36-20□□-□□	132.5	360	200	2.2
AU133-36-25□□-□□	132.5	360	250	2.5
AU133-36-30□□-□□	132.5	360	300	2.9
AU133-36-36□□-□□	132.5	360	360	3.3
AU133-36-43□□-□□	132.5	360	430	3.7
AU133-36-50□□-□□	132.5	360	500	4.3
AU133-43-16□□-□□	132.5	430	160	2.1
AU133-43-20□□-□□	132.5	430	200	2.4
AU133-43-25□□-□□	132.5	430	250	2.7
AU133-43-30□□-□□	132.5	430	300	3.1
AU133-43-36□□-□□	132.5	430	360	3.5
AU133-43-43□□-□□	132.5	430	430	3.9
AU133-43-50□□-□□	132.5	430	500	4.5
AU133-50-30□□-□□	132.5	500	300	3.1
AU133-50-36□□-□□	132.5	500	360	3.5
AU133-50-43□□-□□	132.5	500	430	3.9
AU133-50-50□□-□□	132.5	500	500	4.5

Product no.	H	W	D	Weight (kg)
AU133-30-36□□-□□	132.5	300	360	2.8
AU133-30-43□□-□□	132.5	300	430	3.3
AU133-30-50□□-□□	132.5	300	500	3.7
<b>NEW</b> AU133-36-16□□-□□	132.5	360	160	1.9
AU133-36-20□□-□□	132.5	360	200	2.1
AU133-36-25□□-□□	132.5	360	250	2.5
AU133-36-30□□-□□	132.5	360	300	2.8
AU133-36-36□□-□□	132.5	360	360	3.2
AU133-36-43□□-□□	132.5	360	430	3.7
AU133-36-50□□-□□	132.5	360	500	4.1
<b>NEW</b> AU133-43-16□□-□□	132.5	430	160	2.2
AU133-43-20□□-□□	132.5	430	200	2.4
AU133-43-25□□-□□	132.5	430	250	2.8
AU133-43-30□□-□□	132.5	430	300	3.2
AU133-43-36□□-□□	132.5	430	360	3.6
AU133-43-43□□-□□	132.5	430	430	4.1
AU133-43-50□□-□□	132.5	430	500	4.6
AU133-50-30□□-□□	132.5	500	300	3.5
AU133-50-36□□-□□	132.5	500	360	4.0
AU133-50-43□□-□□	132.5	500	430	4.6
AU133-50-50□□-□□	132.5	500	500	5.1
<b>NEW</b> AU177-16-16□□-□□	177	160	160	1.4
<b>NEW</b> AU177-16-20□□-□□	177	160	200	1.6
<b>NEW</b> AU177-16-25□□-□□	177	160	250	1.8
<b>NEW</b> AU177-16-30□□-□□	177	160	300	2.1
<b>NEW</b> AU177-16-36□□-□□	177	160	360	2.4
<b>NEW</b> AU177-16-43□□-□□	177	160	430	2.7
<b>NEW</b> AU177-20-16□□-□□	177	200	160	1.5
<b>NEW</b> AU177-20-20□□-□□	177	200	200	1.7
<b>NEW</b> AU177-20-25□□-□□	177	200	250	2.0
<b>NEW</b> AU177-20-30□□-□□	177	200	300	2.3
<b>NEW</b> AU177-20-36□□-□□	177	200	360	2.6
<b>NEW</b> AU177-20-43□□-□□	177	200	430	3.0
<b>NEW</b> AU177-25-16□□-□□	177	250	160	1.7
<b>NEW</b> AU177-25-20□□-□□	177	250	200	1.9
<b>NEW</b> AU177-25-25□□-□□	177	250	250	2.2
<b>NEW</b> AU177-25-30□□-□□	177	250	300	2.5
<b>NEW</b> AU177-25-36□□-□□	177	250	360	2.9
<b>NEW</b> AU177-25-43□□-□□	177	250	430	3.3
<b>NEW</b> AU177-30-16□□-□□	177	300	160	1.9
<b>NEW</b> AU177-30-20□□-□□	177	300	200	2.2
<b>NEW</b> AU177-30-25□□-□□	177	300	250	2.5
<b>NEW</b> AU177-30-30□□-□□	177	300	300	2.8
<b>NEW</b> AU177-30-36□□-□□	177	300	360	3.2
<b>NEW</b> AU177-30-43□□-□□	177	300	430	3.7
<b>NEW</b> AU177-30-50□□-□□	177	300	500	4.1
<b>NEW</b> AU177-36-16□□-□□	177	360	160	2.1
<b>NEW</b> AU177-36-20□□-□□	177	360	200	2.4
<b>NEW</b> AU177-36-25□□-□□	177	360	250	2.8
<b>NEW</b> AU177-36-30□□-□□	177	360	300	3.1
<b>NEW</b> AU177-36-36□□-□□	177	360	360	3.6
<b>NEW</b> AU177-36-43□□-□□	177	360	430	4.1
<b>NEW</b> AU177-36-50□□-□□	177	360	500	4.6
<b>NEW</b> AU177-43-16□□-□□	177	430	160	2.4
<b>NEW</b> AU177-43-20□□-□□	177	430	200	2.7
<b>NEW</b> AU177-43-25□□-□□	177	430	250	3.1
<b>NEW</b> AU177-43-30□□-□□	177	430	300	3.5
<b>NEW</b> AU177-43-36□□-□□	177	430	360	4.0
<b>NEW</b> AU177-43-43□□-□□	177	430	430	4.6
<b>NEW</b> AU177-43-50□□-□□	177	430	500	5.1
<b>NEW</b> AU177-50-30□□-□□	177	500	300	3.9
<b>NEW</b> AU177-50-36□□-□□	177	500	360	4.4
<b>NEW</b> AU177-50-43□□-□□	177	500	430	5.0
<b>NEW</b> AU177-50-50□□-□□	177	500	500	5.6

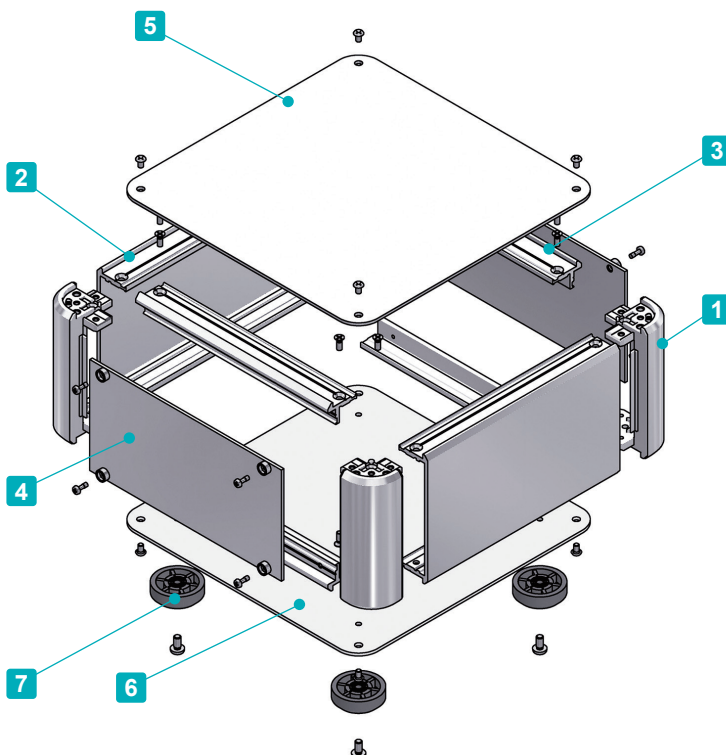




Conductive



- Elegantly designed aluminium enclosure with easily detachable front/rear panels.  
Captive screws allow for ease of maintenance as there is little risk of the screws dropping out and getting lost.
- The inner surface is unfinished, allowing the enclosure to be conductive.
- A large selection of 177 different sizes and 2 colors to choose from.
- Suitable for use as measuring instrument, controller, industrial embedded computer, power supply, audio amplifier, and others.

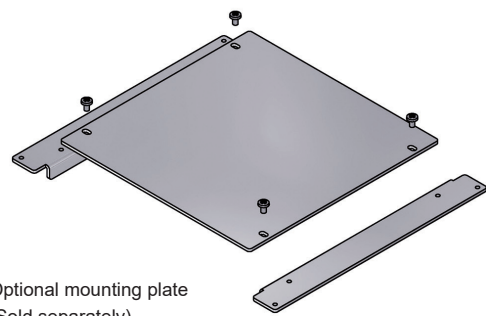


Included screws

- Top / Bottom cover  
M3-5 original trapezoid head (plus / hex) & M3-8 flat head & Nickel plated x 16 pcs
- Frame / Panel support frame  
M3-8 flat head & Nickel plated x 16 pcs
- Rubber feet / Aluminium feet  
M4-8 blind head & Black trivalent chromate x 4 pcs
- Panel  
Captive M2.5-7 pan head & Nickel plated x 8~12 pcs

Recommended torque :  $\begin{cases} \text{M2.5 : } 0.15 \sim 0.2\text{N} \cdot \text{m} \\ \text{M3 / M4 : } 0.3 \sim 0.6\text{N} \cdot \text{m} \end{cases}$

\* Recommended torque listed is for reference only; actual may differ. Assemble after testing torque.



Optional mounting plate (Sold separately)

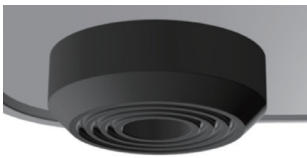
Components

No.	Part name	Pcs	Material	Color / Finish
1	Corner block	4	Diecast aluminium ADC12	Silver • Black / Painted (Unfinished inside)
2	Frame	2	Extruded aluminium A6063S-T5	Silver / Painted (Unfinished inside)
3	Panel support frame	4	Extruded aluminium A6063S-T5	Silver / Painted (Unfinished inside)
4	Panel	2	Aluminium A1100P	Silver / Painted (Conductive inside)
5	Top cover	1	Aluminium A1100P	Silver / Painted (Conductive inside)
6	Bottom cover	1	Aluminium A1100P	Silver / Painted (Conductive inside)
7	Rubber feet : Aluminium feet	4	TPE (Elastomer) : Aluminium	Black : Silver / Anodized

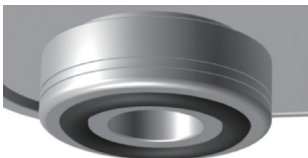
To select Feet, Screw, and Color, follow steps **1** ~ **3** to determine product number.

**1 Feet**

**R** Rubber (Black)



**A** Aluminium (Silver / Anodized)

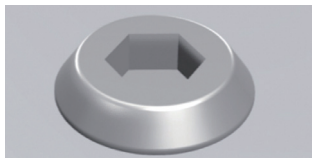


**2 Screw**

**P** Plus (Silver / Nickel plated)



**H** Hex (Silver / Nickel plated)



Hex wrench included.

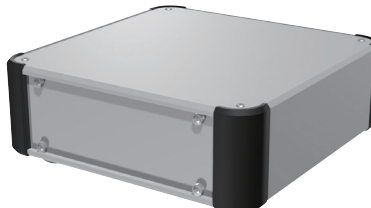
**3 Color**

Please choose from the color combinations listed below.

**S S**



**S B**



**Product Number**

To determine a product number, fill H-W-D dimensions and select Feet, Screw, and Color code in the following blank boxes.

**AUP**

-  -

H-W-D dimensions

**1 Feet** **2 Screw**

R or A P or H

**3 Color**

SS or SB

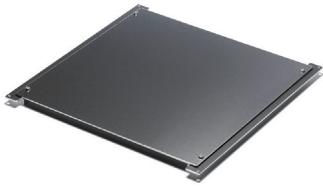
See page 157~158 for dimensions and product no.

**Numbering example :**

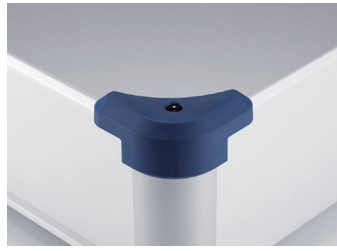
If looking at "H88 x W300 x D200mm, Feet type A, Screw type H, Color type SB"

➔ **AUP 88-30-20 AH-SB**

**Accessories (Optional parts)**



Mounting plate AUC series  
See page 179 ~ 180



Corner guard AUCG series  
See page 180

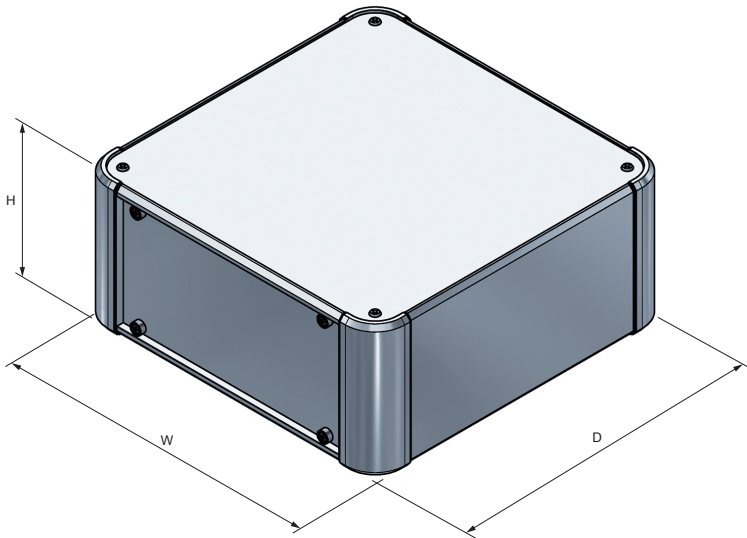


Elastomer carrying handle FM200  
See page FM200 • MH



Tilt leg TLW series  
See page 222

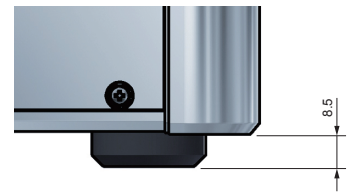
**AUP dimensions**



■ DXF/DWG/PDF/STP drawings available on our website.

■ Feet is selectable between rubber or aluminium type.  
※Rubber and aluminium feet height are different.

**Rubber Feet**



**Aluminium Feet**



**Product no. / Details**

■ Please suffix color code at the end of the product number.

Product no.	H	W	D	Weight (kg)
AUP 66-16-16□□-□□	66	160	160	0.9
AUP 66-16-20□□-□□	66	160	200	1.0
AUP 66-16-25□□-□□	66	160	250	1.2
AUP 66-16-30□□-□□	66	160	300	1.3
<b>NEW</b> AUP 66-16-36□□-□□	66	160	360	1.5
<b>NEW</b> AUP 66-16-43□□-□□	66	160	430	1.7
AUP 66-20-16□□-□□	66	200	160	1.0
AUP 66-20-20□□-□□	66	200	200	1.2
AUP 66-20-25□□-□□	66	200	250	1.4
AUP 66-20-30□□-□□	66	200	300	1.5
AUP 66-20-36□□-□□	66	200	360	1.7
AUP 66-20-43□□-□□	66	200	430	2.0
AUP 66-25-16□□-□□	66	250	160	1.2
AUP 66-25-20□□-□□	66	250	200	1.4
AUP 66-25-25□□-□□	66	250	250	1.6
AUP 66-25-30□□-□□	66	250	300	1.8
AUP 66-25-36□□-□□	66	250	360	2.0
AUP 66-25-43□□-□□	66	250	430	2.3
AUP 66-30-16□□-□□	66	300	160	1.4
AUP 66-30-20□□-□□	66	300	200	1.5
AUP 66-30-25□□-□□	66	300	250	1.8
AUP 66-30-30□□-□□	66	300	300	2.0

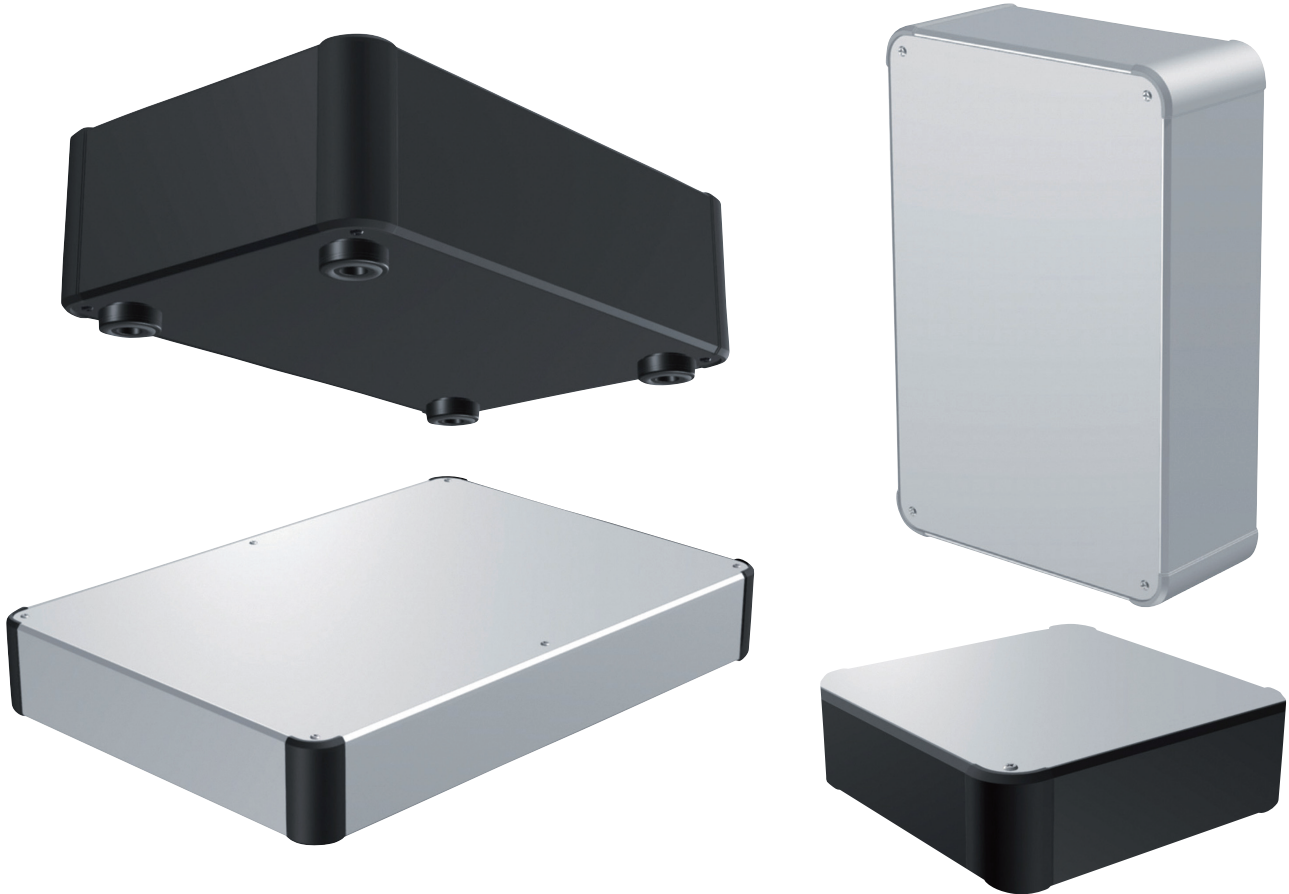
Product no.	H	W	D	Weight (kg)
AUP 66-30-36□□-□□	66	300	360	2.3
AUP 66-30-43□□-□□	66	300	430	2.6
AUP 66-30-50□□-□□	66	300	500	3.0
<b>NEW</b> AUP 66-36-16□□-□□	66	360	160	1.6
AUP 66-36-20□□-□□	66	360	200	1.8
AUP 66-36-25□□-□□	66	360	250	2.0
AUP 66-36-30□□-□□	66	360	300	2.3
AUP 66-36-36□□-□□	66	360	360	2.6
AUP 66-36-43□□-□□	66	360	430	3.0
AUP 66-36-50□□-□□	66	360	500	3.4
<b>NEW</b> AUP 66-43-16□□-□□	66	430	160	1.8
AUP 66-43-20□□-□□	66	430	200	2.1
AUP 66-43-25□□-□□	66	430	250	2.4
AUP 66-43-30□□-□□	66	430	300	2.7
AUP 66-43-36□□-□□	66	430	360	3.0
AUP 66-43-43□□-□□	66	430	430	3.4
AUP 66-43-50□□-□□	66	430	500	3.9
AUP 66-50-30□□-□□	66	500	300	3.0
AUP 66-50-36□□-□□	66	500	360	3.4
AUP 66-50-43□□-□□	66	500	430	3.9
AUP 66-50-50□□-□□	66	500	500	4.3

Product no. / Details

■ Please suffix color code at the end of the product number.

Product no.	H	W	D	Weight (kg)
AUP 88-16-16□□-□□	88	160	160	1.0
AUP 88-16-20□□-□□	88	160	200	1.2
AUP 88-16-25□□-□□	88	160	250	1.3
AUP 88-16-30□□-□□	88	160	300	1.5
<b>NEW</b> AUP 88-16-36□□-□□	88	160	360	1.7
<b>NEW</b> AUP 88-16-43□□-□□	88	160	430	2.0
AUP 88-20-16□□-□□	88	200	160	1.2
AUP 88-20-20□□-□□	88	200	200	1.3
AUP 88-20-25□□-□□	88	200	250	1.5
AUP 88-20-30□□-□□	88	200	300	1.7
AUP 88-20-36□□-□□	88	200	360	1.9
AUP 88-20-43□□-□□	88	200	430	2.2
AUP 88-25-16□□-□□	88	250	160	1.3
AUP 88-25-20□□-□□	88	250	200	1.5
AUP 88-25-25□□-□□	88	250	250	1.7
AUP 88-25-30□□-□□	88	250	300	1.9
AUP 88-25-36□□-□□	88	250	360	2.2
AUP 88-25-43□□-□□	88	250	430	2.5
AUP 88-30-16□□-□□	88	300	160	1.5
AUP 88-30-20□□-□□	88	300	200	1.7
AUP 88-30-25□□-□□	88	300	250	1.9
AUP 88-30-30□□-□□	88	300	300	2.2
AUP 88-30-36□□-□□	88	300	360	2.5
AUP 88-30-43□□-□□	88	300	430	2.9
AUP 88-30-50□□-□□	88	300	500	3.2
<b>NEW</b> AUP 88-36-16□□-□□	88	360	160	1.7
AUP 88-36-20□□-□□	88	360	200	1.9
AUP 88-36-25□□-□□	88	360	250	2.2
AUP 88-36-30□□-□□	88	360	300	2.5
AUP 88-36-36□□-□□	88	360	360	2.8
AUP 88-36-43□□-□□	88	360	430	3.2
AUP 88-36-50□□-□□	88	360	500	3.6
<b>NEW</b> AUP 88-43-16□□-□□	88	430	160	2.0
AUP 88-43-20□□-□□	88	430	200	2.2
AUP 88-43-25□□-□□	88	430	250	2.5
AUP 88-43-30□□-□□	88	430	300	2.9
AUP 88-43-36□□-□□	88	430	360	3.2
AUP 88-43-43□□-□□	88	430	430	3.7
AUP 88-43-50□□-□□	88	430	500	4.1
AUP 88-50-30□□-□□	88	500	300	3.2
AUP 88-50-36□□-□□	88	500	360	3.6
AUP 88-50-43□□-□□	88	500	430	4.1
AUP 88-50-50□□-□□	88	500	500	4.6
AUP133-16-16□□-□□	132.5	160	160	1.3
AUP133-16-20□□-□□	132.5	160	200	1.4
AUP133-16-25□□-□□	132.5	160	250	1.7
AUP133-16-30□□-□□	132.5	160	300	1.9
<b>NEW</b> AUP133-16-36□□-□□	132.5	160	360	2.2
<b>NEW</b> AUP133-16-43□□-□□	132.5	160	430	2.5
AUP133-20-16□□-□□	132.5	200	160	1.4
AUP133-20-20□□-□□	132.5	200	200	1.6
AUP133-20-25□□-□□	132.5	200	250	1.8
AUP133-20-30□□-□□	132.5	200	300	2.1
AUP133-20-36□□-□□	132.5	200	360	2.4
AUP133-20-43□□-□□	132.5	200	430	2.7
AUP133-25-16□□-□□	132.5	250	160	1.6
AUP133-25-20□□-□□	132.5	250	200	1.8
AUP133-25-25□□-□□	132.5	250	250	2.1
AUP133-25-30□□-□□	132.5	250	300	2.4
AUP133-25-36□□-□□	132.5	250	360	2.7
AUP133-25-43□□-□□	132.5	250	430	3.1
AUP133-30-16□□-□□	132.5	300	160	1.8
AUP133-30-20□□-□□	132.5	300	200	2.0
AUP133-30-25□□-□□	132.5	300	250	2.3
AUP133-30-30□□-□□	132.5	300	300	2.6
AUP133-30-36□□-□□	132.5	300	360	3.0
AUP133-30-43□□-□□	132.5	300	430	3.4
AUP133-30-50□□-□□	132.5	300	500	3.8
AUP133-30-50□□-□□	132.5	300	500	4.2

Product no.	H	W	D	Weight (kg)
AUP133-30-36□□-□□	132.5	300	360	3.0
AUP133-30-43□□-□□	132.5	300	430	3.4
AUP133-30-50□□-□□	132.5	300	500	3.8
<b>NEW</b> AUP133-36-16□□-□□	132.5	360	160	2.1
AUP133-36-20□□-□□	132.5	360	200	2.3
AUP133-36-25□□-□□	132.5	360	250	2.6
AUP133-36-30□□-□□	132.5	360	300	3.0
AUP133-36-36□□-□□	132.5	360	360	3.3
AUP133-36-43□□-□□	132.5	360	430	3.8
AUP133-36-50□□-□□	132.5	360	500	4.3
<b>NEW</b> AUP133-43-16□□-□□	132.5	430	160	2.4
AUP133-43-20□□-□□	132.5	430	200	2.6
AUP133-43-25□□-□□	132.5	430	250	3.0
AUP133-43-30□□-□□	132.5	430	300	3.4
AUP133-43-36□□-□□	132.5	430	360	3.8
AUP133-43-43□□-□□	132.5	430	430	4.3
AUP133-43-50□□-□□	132.5	430	500	4.8
AUP133-50-36□□-□□	132.5	500	360	4.2
AUP133-50-43□□-□□	132.5	500	430	4.8
AUP133-50-50□□-□□	132.5	500	500	5.3
<b>NEW</b> AUP177-16-16□□-□□	177	160	160	1.4
<b>NEW</b> AUP177-16-20□□-□□	177	160	200	1.6
<b>NEW</b> AUP177-16-25□□-□□	177	160	250	1.9
<b>NEW</b> AUP177-16-30□□-□□	177	160	300	2.1
<b>NEW</b> AUP177-16-36□□-□□	177	160	360	2.4
<b>NEW</b> AUP177-16-43□□-□□	177	160	430	2.8
<b>NEW</b> AUP177-20-16□□-□□	177	200	160	1.6
<b>NEW</b> AUP177-20-20□□-□□	177	200	200	1.8
<b>NEW</b> AUP177-20-25□□-□□	177	200	250	2.1
<b>NEW</b> AUP177-20-30□□-□□	177	200	300	2.4
<b>NEW</b> AUP177-20-36□□-□□	177	200	360	2.7
<b>NEW</b> AUP177-20-43□□-□□	177	200	430	3.1
<b>NEW</b> AUP177-25-16□□-□□	177	250	160	1.8
<b>NEW</b> AUP177-25-20□□-□□	177	250	200	2.1
<b>NEW</b> AUP177-25-25□□-□□	177	250	250	2.4
<b>NEW</b> AUP177-25-30□□-□□	177	250	300	2.7
<b>NEW</b> AUP177-25-36□□-□□	177	250	360	3.0
<b>NEW</b> AUP177-25-43□□-□□	177	250	430	3.5
<b>NEW</b> AUP177-30-16□□-□□	177	300	160	2.0
<b>NEW</b> AUP177-30-20□□-□□	177	300	200	2.3
<b>NEW</b> AUP177-30-25□□-□□	177	300	250	2.6
<b>NEW</b> AUP177-30-30□□-□□	177	300	300	3.0
<b>NEW</b> AUP177-30-36□□-□□	177	300	360	3.3
<b>NEW</b> AUP177-30-43□□-□□	177	300	430	3.8
<b>NEW</b> AUP177-30-50□□-□□	177	300	500	4.3
<b>NEW</b> AUP177-36-16□□-□□	177	360	160	2.3
<b>NEW</b> AUP177-36-20□□-□□	177	360	200	2.6
<b>NEW</b> AUP177-36-25□□-□□	177	360	250	3.0
<b>NEW</b> AUP177-36-30□□-□□	177	360	300	3.3
<b>NEW</b> AUP177-36-36□□-□□	177	360	360	3.7
<b>NEW</b> AUP177-36-43□□-□□	177	360	430	4.3
<b>NEW</b> AUP177-36-50□□-□□	177	360	500	4.8
<b>NEW</b> AUP177-43-16□□-□□	177	430	160	2.6
<b>NEW</b> AUP177-43-20□□-□□	177	430	200	3.0
<b>NEW</b> AUP177-43-25□□-□□	177	430	250	3.4
<b>NEW</b> AUP177-43-30□□-□□	177	430	300	3.8
<b>NEW</b> AUP177-43-36□□-□□	177	430	360	4.2
<b>NEW</b> AUP177-43-43□□-□□	177	430	430	4.8
<b>NEW</b> AUP177-43-50□□-□□	177	430	500	5.4
<b>NEW</b> AUP177-50-30□□-□□	177	500	300	4.2
<b>NEW</b> AUP177-50-36□□-□□	177	500	360	4.7
<b>NEW</b> AUP177-50-43□□-□□	177	500	430	5.3
<b>NEW</b> AUP177-50-50□□-□□	177	500	500	5.9



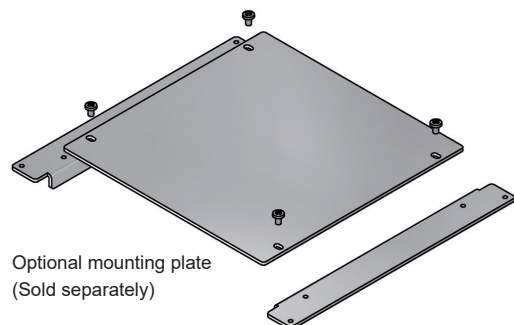
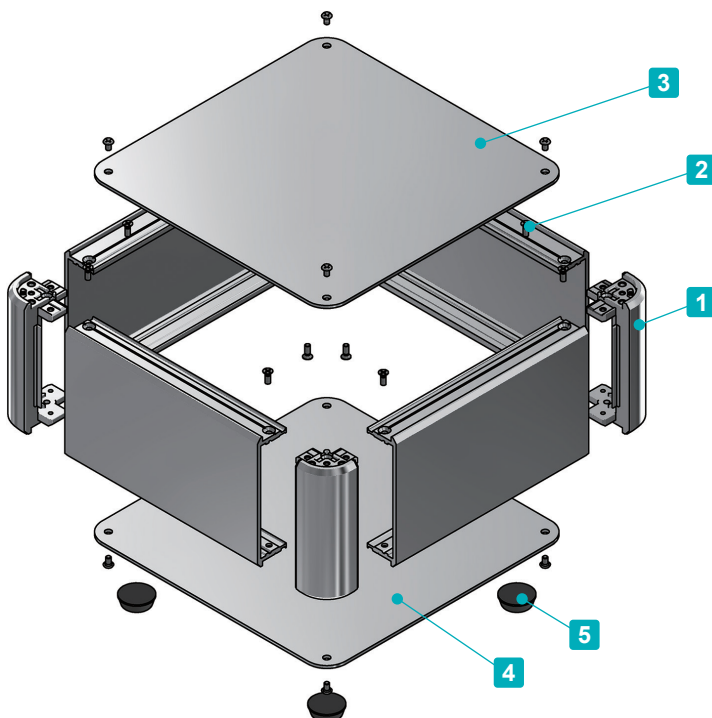
- Round corner designed aluminium control box with 4 extruded aluminium frames.
- A large selection of 135 different sizes and 4 colors to choose from.
- Aluminium control box is suitable for use as industrial controller, machine controller, audio amplifier, power supply, and so on.
- Feet is selectable between adhesive rubber or aluminium type.

Included screws

- Top / Bottom cover  
M3-5 original trapezoid head (plus / hex) & Nickel plated / Black trivalent chromate x 8~16 pcs
- Frame  
M3-8 flat head & Nickel plated x 16 pcs
- Aluminium feet  
M4-8 bind head & Black trivalent chromate x 4 pcs

Recommended torque : 0.3 ~ 0.6N • m

\* Recommended torque listed is for reference only; actual may differ  
Assemble after testing torque.



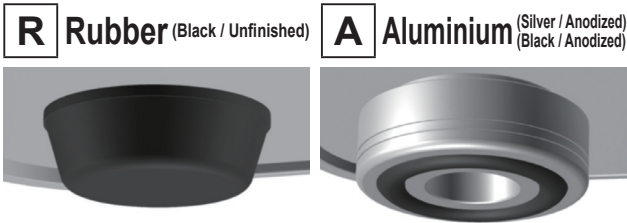
Optional mounting plate  
(Sold separately)

Components

No.	Part name	Pcs	Material	Color / Finish
1	Corner block	4	Diecast aluminium ADC12	Silver • Black / Painted (Unfinished inside)
2	Frame	4	Extruded aluminium A6063S-T5	Silver • Black / Anodized
3	Top cover	1	Aluminium A1100P	Silver • Black / Anodized
4	Bottom cover	1	Aluminium A1100P	Silver • Black / Anodized
5	Adhesive Rubber feet : Aluminium feet	4	Synthetic rubber : Aluminium	Black : Silver • Black / Anodized

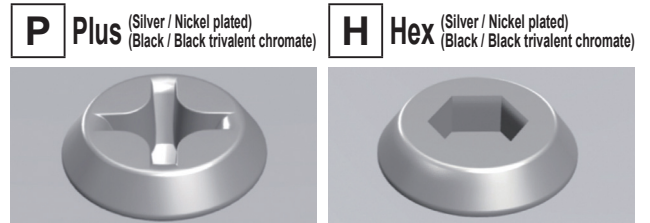
To select Feet, Screw, and Color, follow steps 1 ~ 3 to determine product number.

1 Feet



\*Color of "Aluminium Feet" will be the same as bottom cover color.

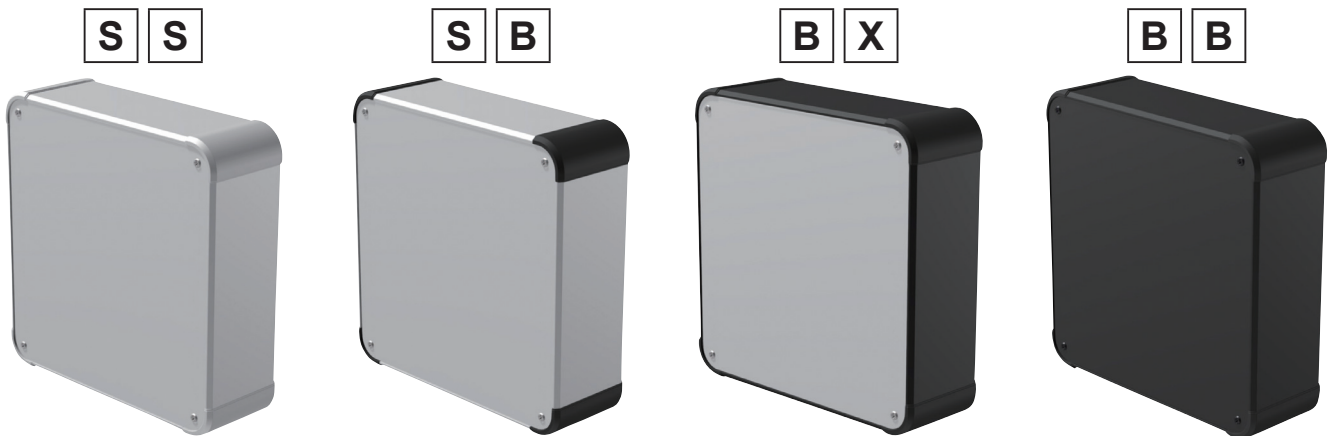
2 Screw



Hex wrench included.

3 Color

Please choose from the color combinations listed below.



Product Number

To determine a product number, fill H-W-D dimensions and select Feet, Screw, and Color code in the following blank boxes.

**AUX**  -  -         -

H-W-D dimensions      **1** Feet **2** Screw      **3** Color

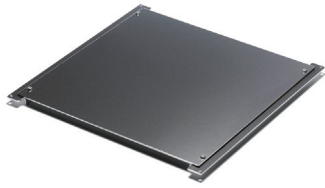
See page 165~166 for dimensions and product no.      R or A    P or H      SS • SB • BX • BB

Numbering example :

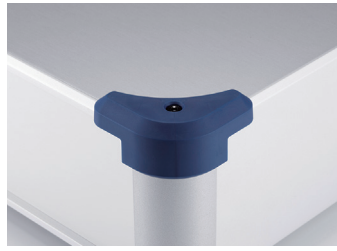
If looking at "H66 x W250 x D250mm, Feet type R, Screw type H, Color type BX"

➔ **AUX 66-25-25 RH-BX**

**Accessories (Optional parts)**



Mounting plate AUC series  
See page 179 ~ 180



Corner guard AUCG series  
See page 180



Elastomer carrying handle FM200  
See page FM200 • MH

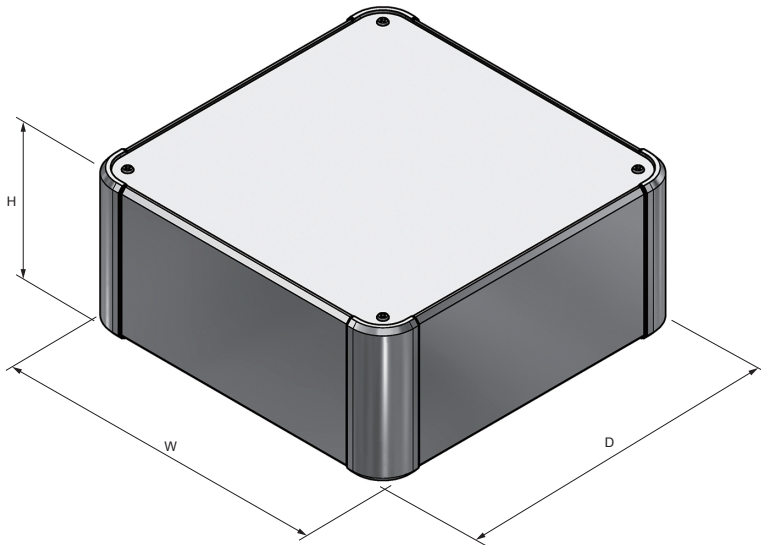


Aluminium handle OH series  
See page OH • KH-1



Wall mount support arm MAR series  
See page 181 ~ 182

**AUX dimensions**



■ DXF/DWG/PDF/STP drawings available on our website.

■ Feet is selectable between rubber or aluminium type.  
※Rubber and aluminium feet height are different.

**Rubber Feet**



**Aluminium Feet**



**Product no. / Details**

■ Please suffix color code at the end of the product number.

Product no.	H	W	D	Weight (kg)
<b>NEW</b> AUX 44-16-16□□-□□	44	160	160	0.7
<b>NEW</b> AUX 44-20-16□□-□□	44	200	160	0.8
<b>NEW</b> AUX 44-20-20□□-□□	44	200	200	0.9
<b>NEW</b> AUX 44-25-16□□-□□	44	250	160	1.0
<b>NEW</b> AUX 44-25-20□□-□□	44	250	200	1.1
<b>NEW</b> AUX 44-25-25□□-□□	44	250	250	1.3
<b>NEW</b> AUX 44-30-16□□-□□	44	300	160	1.1
<b>NEW</b> AUX 44-30-20□□-□□	44	300	200	1.3
<b>NEW</b> AUX 44-30-25□□-□□	44	300	250	1.5
<b>NEW</b> AUX 44-30-30□□-□□	44	300	300	1.7
<b>NEW</b> AUX 44-36-16□□-□□	44	360	160	1.3
<b>NEW</b> AUX 44-36-20□□-□□	44	360	200	1.5
<b>NEW</b> AUX 44-36-25□□-□□	44	360	250	1.7
<b>NEW</b> AUX 44-36-30□□-□□	44	360	300	2.0

Product no.	H	W	D	Weight (kg)
<b>NEW</b> AUX 44-36-36□□-□□	44	360	360	2.2
<b>NEW</b> AUX 44-43-16□□-□□	44	430	160	1.5
<b>NEW</b> AUX 44-43-20□□-□□	44	430	200	1.7
<b>NEW</b> AUX 44-43-25□□-□□	44	430	250	2.0
<b>NEW</b> AUX 44-43-30□□-□□	44	430	300	2.3
<b>NEW</b> AUX 44-43-36□□-□□	44	430	360	2.6
<b>NEW</b> AUX 44-43-43□□-□□	44	430	430	3.0
<b>NEW</b> AUX 44-50-30□□-□□	44	500	300	2.6
<b>NEW</b> AUX 44-50-36□□-□□	44	500	360	3.0
<b>NEW</b> AUX 44-50-43□□-□□	44	500	430	3.4
<b>NEW</b> AUX 44-50-50□□-□□	44	500	500	3.9
<b>NEW</b> AUX 44-60-36□□-□□	44	600	360	3.5
<b>NEW</b> AUX 44-60-43□□-□□	44	600	430	4.0

Product no. / Details

■ Please suffix color code at the end of the product number.

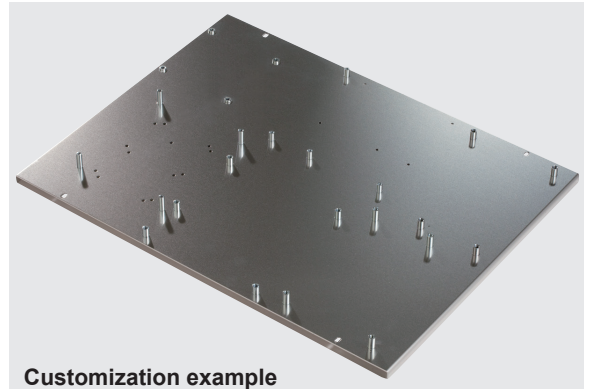
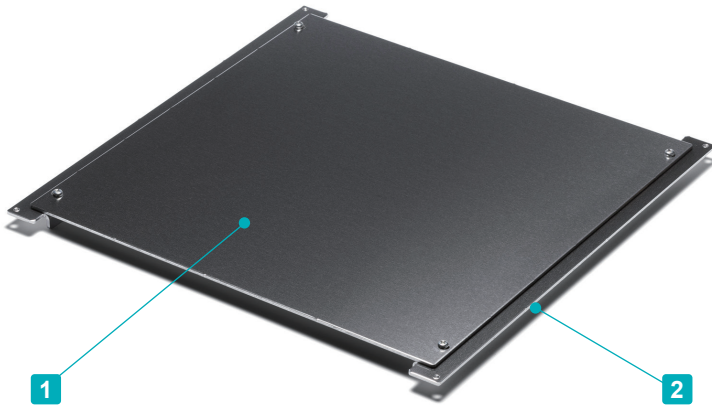
Product no.	H	W	D	Weight (kg)
AUX 66-16-16□□-□□	66	160	160	0.9
AUX 66-20-16□□-□□	66	200	160	1.0
AUX 66-20-20□□-□□	66	200	200	1.1
AUX 66-25-16□□-□□	66	250	160	1.2
AUX 66-25-20□□-□□	66	250	200	1.3
AUX 66-25-25□□-□□	66	250	250	1.5
AUX 66-30-16□□-□□	66	300	160	1.3
AUX 66-30-20□□-□□	66	300	200	1.5
AUX 66-30-25□□-□□	66	300	250	1.7
AUX 66-30-30□□-□□	66	300	300	2.0
<b>NEW</b> AUX 66-36-16□□-□□	66	360	160	1.4
AUX 66-36-20□□-□□	66	360	200	1.7
AUX 66-36-25□□-□□	66	360	250	2.0
AUX 66-36-30□□-□□	66	360	300	2.2
AUX 66-36-36□□-□□	66	360	360	2.6
<b>NEW</b> AUX 66-43-16□□-□□	66	430	160	1.7
AUX 66-43-20□□-□□	66	430	200	2.0
AUX 66-43-25□□-□□	66	430	250	2.3
AUX 66-43-30□□-□□	66	430	300	2.6
AUX 66-43-36□□-□□	66	430	360	3.0
AUX 66-43-43□□-□□	66	430	430	3.4
AUX 66-50-30□□-□□	66	500	300	2.9
AUX 66-50-36□□-□□	66	500	360	3.3
AUX 66-50-43□□-□□	66	500	430	3.8
AUX 66-50-50□□-□□	66	500	500	4.3
AUX 66-60-36□□-□□	66	600	360	3.8
AUX 66-60-43□□-□□	66	600	430	4.4
AUX 88-16-16□□-□□	88	160	160	1.0
AUX 88-20-16□□-□□	88	200	160	1.1
AUX 88-20-20□□-□□	88	200	200	1.3
AUX 88-25-16□□-□□	88	250	160	1.3
AUX 88-25-20□□-□□	88	250	200	1.5
AUX 88-25-25□□-□□	88	250	250	1.7
AUX 88-30-16□□-□□	88	300	160	1.5
AUX 88-30-20□□-□□	88	300	200	1.7
AUX 88-30-25□□-□□	88	300	250	1.9
AUX 88-30-30□□-□□	88	300	300	2.2
<b>NEW</b> AUX 88-36-16□□-□□	88	360	160	1.6
AUX 88-36-20□□-□□	88	360	200	1.9
AUX 88-36-25□□-□□	88	360	250	2.2
AUX 88-36-30□□-□□	88	360	300	2.4
AUX 88-36-36□□-□□	88	360	360	2.8
<b>NEW</b> AUX 88-43-16□□-□□	88	430	160	1.9
AUX 88-43-20□□-□□	88	430	200	2.2
AUX 88-43-25□□-□□	88	430	250	2.5
AUX 88-43-30□□-□□	88	430	300	2.8
AUX 88-43-36□□-□□	88	430	360	3.2
AUX 88-43-43□□-□□	88	430	430	3.6
AUX 88-50-30□□-□□	88	500	300	3.2
AUX 88-50-36□□-□□	88	500	360	3.6
AUX 88-50-43□□-□□	88	500	430	4.1
AUX 88-50-50□□-□□	88	500	500	4.6
AUX 88-60-36□□-□□	88	600	360	4.1
AUX 88-60-43□□-□□	88	600	430	4.7

Product no.	H	W	D	Weight (kg)
AUX133-16-16□□-□□	132.5	160	160	1.3
AUX133-20-16□□-□□	132.5	200	160	1.5
AUX133-20-20□□-□□	132.5	200	200	1.7
AUX133-25-16□□-□□	132.5	250	160	1.7
AUX133-25-20□□-□□	132.5	250	200	1.9
AUX133-25-25□□-□□	132.5	250	250	2.2
AUX133-30-16□□-□□	132.5	300	160	1.9
AUX133-30-20□□-□□	132.5	300	200	2.1
AUX133-30-25□□-□□	132.5	300	250	2.4
AUX133-30-30□□-□□	132.5	300	300	2.7
<b>NEW</b> AUX133-36-16□□-□□	132.5	360	160	2.2
AUX133-36-20□□-□□	132.5	360	200	2.4
AUX133-36-25□□-□□	132.5	360	250	2.7
AUX133-36-30□□-□□	132.5	360	300	3.1
AUX133-36-36□□-□□	132.5	360	360	3.4
<b>NEW</b> AUX133-43-16□□-□□	132.5	430	160	2.5
AUX133-43-20□□-□□	132.5	430	200	2.8
AUX133-43-25□□-□□	132.5	430	250	3.1
AUX133-43-30□□-□□	132.5	430	300	3.5
AUX133-43-36□□-□□	132.5	430	360	3.9
AUX133-43-43□□-□□	132.5	430	430	4.4
AUX133-50-30□□-□□	132.5	500	300	3.9
AUX133-50-36□□-□□	132.5	500	360	4.4
AUX133-50-43□□-□□	132.5	500	430	4.9
AUX133-50-50□□-□□	132.5	500	500	5.5
AUX133-60-36□□-□□	132.5	600	360	5.0
AUX133-60-43□□-□□	132.5	600	430	5.7
<b>NEW</b> AUX177-16-16□□-□□	177	160	160	1.5
<b>NEW</b> AUX177-20-16□□-□□	177	200	160	1.7
<b>NEW</b> AUX177-20-20□□-□□	177	200	200	1.9
<b>NEW</b> AUX177-25-16□□-□□	177	250	160	1.9
<b>NEW</b> AUX177-25-20□□-□□	177	250	200	2.2
<b>NEW</b> AUX177-25-25□□-□□	177	250	250	2.5
<b>NEW</b> AUX177-30-16□□-□□	177	300	160	2.2
<b>NEW</b> AUX177-30-20□□-□□	177	300	200	2.4
<b>NEW</b> AUX177-30-25□□-□□	177	300	250	2.8
<b>NEW</b> AUX177-30-30□□-□□	177	300	300	3.1
<b>NEW</b> AUX177-36-16□□-□□	177	360	160	2.5
<b>NEW</b> AUX177-36-20□□-□□	177	360	200	2.8
<b>NEW</b> AUX177-36-25□□-□□	177	360	250	3.1
<b>NEW</b> AUX177-36-30□□-□□	177	360	300	3.5
<b>NEW</b> AUX177-36-36□□-□□	177	360	360	3.9
<b>NEW</b> AUX177-43-16□□-□□	177	430	160	2.9
<b>NEW</b> AUX177-43-20□□-□□	177	430	200	3.2
<b>NEW</b> AUX177-43-25□□-□□	177	430	250	3.6
<b>NEW</b> AUX177-43-30□□-□□	177	430	300	4.0
<b>NEW</b> AUX177-43-36□□-□□	177	430	360	4.5
<b>NEW</b> AUX177-43-43□□-□□	177	430	430	5.0
<b>NEW</b> AUX177-50-30□□-□□	177	500	300	4.4
<b>NEW</b> AUX177-50-36□□-□□	177	500	360	5.0
<b>NEW</b> AUX177-50-43□□-□□	177	500	430	5.6
<b>NEW</b> AUX177-50-50□□-□□	177	500	500	6.2
<b>NEW</b> AUX177-60-36□□-□□	177	600	360	5.7
<b>NEW</b> AUX177-60-43□□-□□	177	600	430	6.4



AUC series

MOUNTING PLATE for AU□ series



Customization example

■ See page CUSTOM-9 ~ CUSTOM-11 and our website for further details.

■ Mounting plate for AUH, AUR, AUPR, AUPRE, AUXR, AUXRE, AUGH, AUG, AUGE, AU, AUP, AUPE, AUX, and AUXE series.

Components

No.	Part name	Pcs	Material	Finish
1	Mounting plate	1	Aluminium A1050P t=2.0	Unfinished
2	L-bracket	2	Aluminium A1050P t=2.0	Unfinished

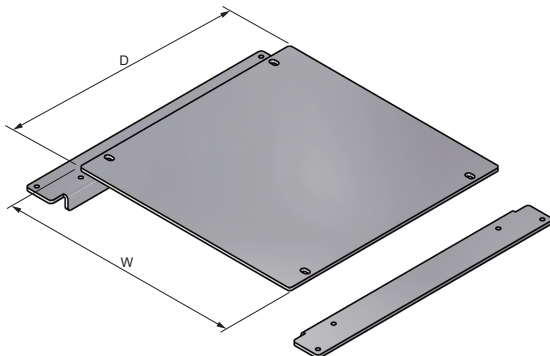
Included screw :

- Corner block M3 flat head : Nickel plated x 4
- Mounting plate M3-5 pan head : Trivalent chromate x 4

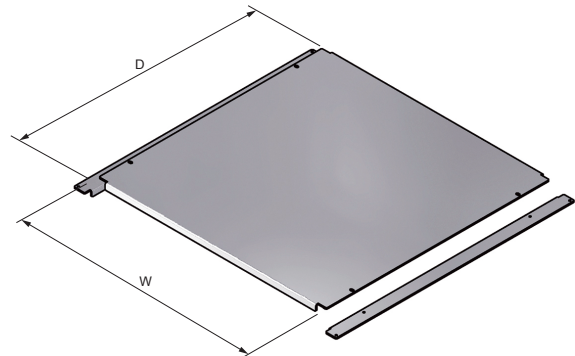
■ DXF/DWG/PDF drawings available on our website.

AUC dimensions

Non-reinforced (N) type



Reinforced (Y) type

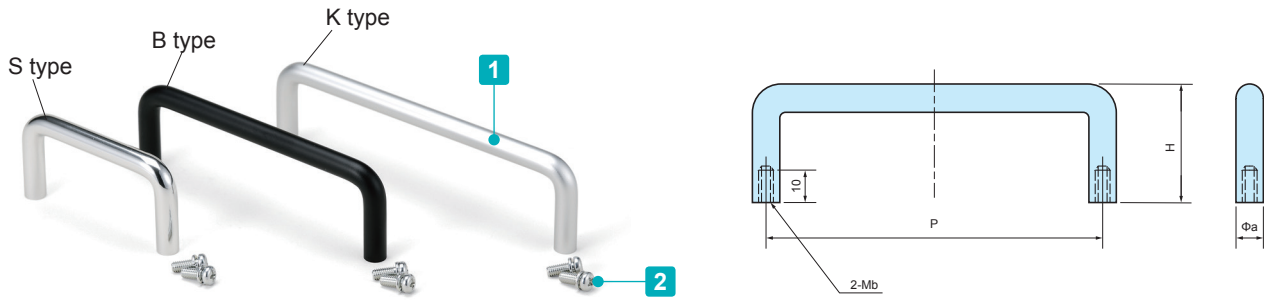


Product no. / Details

Product no.	W	D	Enclosure W x D	Reinforcement	Weight (g)
AUC16-16	108	108	160×160	N	102
AUC16-20	108	148	160×200	N	138
AUC16-25	108	198	160×250	N	181
AUC16-30	108	248	160×300	N	226
NEW AUC16-36	108	308	160×360	N	279
NEW AUC16-43	108	378	160×430	N	340
AUC20-16	148	108	200×160	N	126
AUC20-20	148	148	200×200	N	170
AUC20-25	148	198	200×250	N	224
AUC20-30	148	248	200×300	N	279
AUC20-36	148	308	200×360	N	345
AUC20-43	148	378	200×430	N	422
AUC25-16	198	108	250×160	N	155
AUC25-20	198	148	250×200	N	210
AUC25-25	198	198	250×250	N	278
AUC25-30	198	248	250×300	N	346
AUC25-36	198	308	250×360	N	428
AUC25-43	198	378	250×430	N	524
AUC30-16	248	108	300×160	N	184
AUC30-20	248	148	300×200	N	249
AUC30-25	248	198	300×250	N	331
AUC30-30	248	248	300×300	N	413
AUC30-36	248	308	300×360	N	512

Product no.	W	D	Enclosure W x D	Reinforcement	Weight (g)
AUC30-43	248	378	300×430	N	626
AUC30-50	248	448	300×500	N	741
NEW AUC36-16	308	108	360×160	N	219
AUC36-20	308	148	360×200	N	297
AUC36-25	308	198	360×250	N	395
AUC36-30	308	248	360×300	N	494
AUC36-36	308	308	360×360	N	581
AUC36-43	308	378	360×430	N	749
AUC36-50	308	448	360×500	N	886
NEW AUC43-16	378	108	430×160	Y	287
AUC43-20	378	148	430×200	Y	353
AUC43-25	378	198	430×250	Y	470
AUC43-30	378	248	430×300	Y	587
AUC43-36	378	308	430×360	Y	728
AUC43-43	378	378	430×430	Y	918
AUC43-50	378	448	430×500	Y	1,082
AUC50-30	448	248	500×300	Y	681
AUC50-36	448	308	500×360	Y	814
AUC50-43	448	378	500×430	Y	1,061
AUC50-50	448	448	500×500	Y	1,257
AUC60-36	548	308	600×360	Y	1,021
AUC60-43	548	378	600×430	Y	1,279

## BH SERIES ROUNDED ALUMINIUM HANDLE



### Components

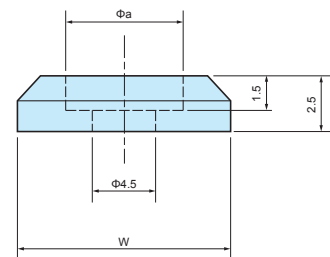
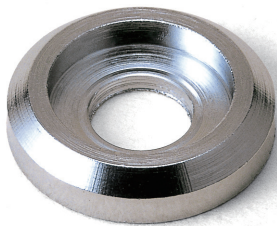
No.	Part name	Pcs	Material	Color / Finish
1	Handle	1	Extruded aluminium A5056S	Polished • Matte anodized
2	Screw	2	Steel	Trivalent chromate

### Product no. / Dimensions

■ K type only available on BH-100, 120, 150, and 180 models.

Product no.			P	H	a	b	Pack of
● Silver polished	● Black matte anodized	● Silver matte anodized					
BH- 26S	BH- 26B	-	26	25	6	3	2
BH- 30S	BH- 30B	-	30	35	8	4	2
BH- 50S	BH- 50B	-	50	35	8	4	2
BH- 60S	BH- 60B	-	60	35	8	4	2
BH- 70S	BH- 70B	-	70	35	8	4	2
BH- 80S	BH- 80B	-	80	35	8	4	2
BH-100S	BH-100B	BH-100K	100	35	8	4	2
BH-110S	BH-110B	-	110	35	8	4	2
BH-120S	BH-120B	BH-120K	120	35	8	4	2
BH-150S	BH-150B	BH-150K	150	35	8	4	2
BH-180S	BH-180B	BH-180K	180	35	8	4	2

## Z-P SERIES WASHER for HANDLE



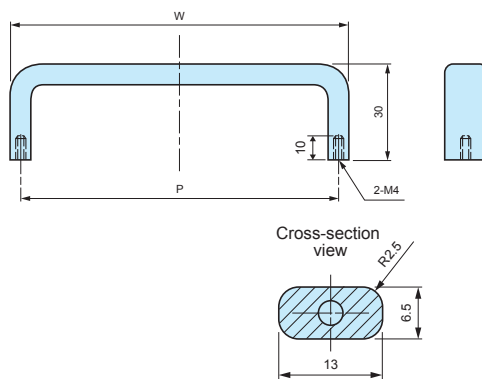
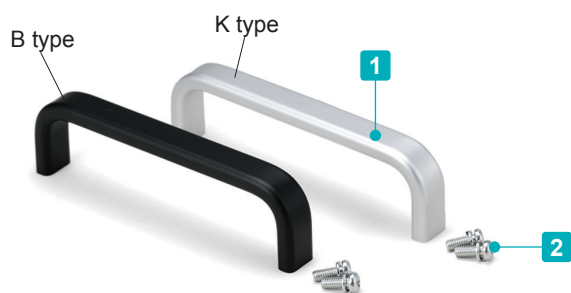
■ Brass washer for BH • KH series.

### Product no. / Dimensions

■ Material / Brass

Product no.		W	a	Pack of
Chrome plated	Black painted			
Z-P6S	Z-P6B	10	6.2	10
Z-P8S	Z-P8B	12	8.2	10

**OH SERIES ALUMINIUM HANDLE**



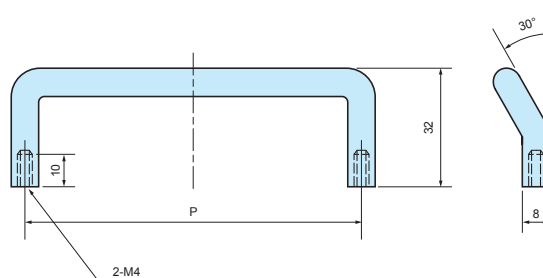
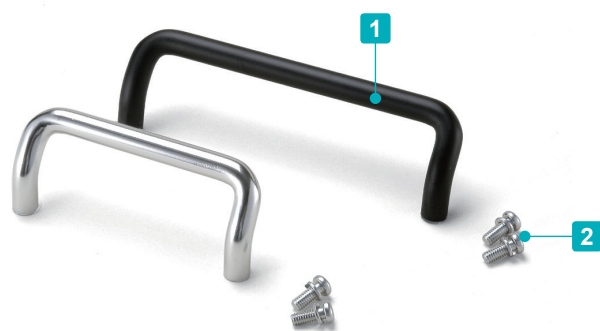
**Components**

No.	Part name	Pcs	Material	Color / Finish
1	Handle	1	Extruded aluminium A6063S-T5	Matte anodized
2	Screw (M4-10 Pan head with spring washer)	2	Steel	Trivalent chromate

**Product no. / Dimensions**

Product no.		P	W	Pack of
● Black matte anodized	● Silver matte anodized			
OH- 55B	OH- 55K	55	61.5	2
OH- 70B	OH- 70K	70	76.5	2
OH- 85B	OH- 85K	85	91.5	2
OH-100B	OH-100K	100	106.5	2
OH-120B	OH-120K	120	126.5	2
OH-140B	OH-140K	140	146.5	2
OH-170B	OH-170K	170	176.5	2

**KH SERIES ANGLED ALUMINIUM HANDLE**



**Components**

No.	Part name	Pcs	Material	Color / Finish
1	Handle	1	Extruded aluminium A5056S	Polished • Matte anodized
2	Screw (M4-10 Pan head with spring washer)	2	Steel	Trivalent chromate

**Product no. / Dimensions**

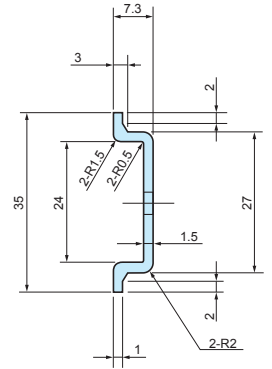
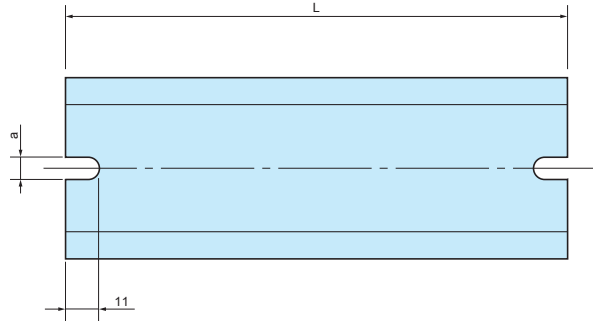
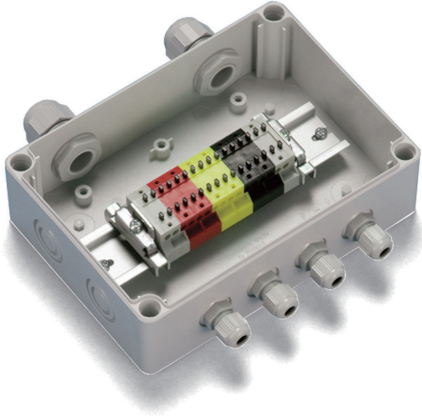
Product no.		P	Pack of
● Silver polished	● Black matte anodized		
KH- 70S	KH- 70B	70	2
KH-100S	KH-100B	100	2

FDR SERIES

DIN-RAIL



- DIN rail for installation of terminals, relays or switches inside enclosures.
- Available in different models and lengths to fit a wide variety of mounting boss pitch.
- FDR-1000 is available if customized length is required.



Feature

Material	Finish
Extruded Aluminium A6063S-T5	Silver anodized

Product no. / Dimensions

Product no.	L	a	Matching boss pitch
FDR- 50	50	4.2	32 ~ 42
57	57	4.2	39 ~ 49
66	66	4.2	48 ~ 58
77	77	4.2	59 ~ 69
80	80	4.2	62 ~ 72
87	87	4.2	69 ~ 79
92	92	4.2	74 ~ 84
100	100	4.2	82 ~ 92
106	106	4.2	88 ~ 98
110	110	4.2	92 ~ 102
120	120	4.2	102 ~ 112
128	128	4.2	110 ~ 120
137	137	4.2	119 ~ 129
142	142	4.2	124 ~ 134
146	146	4.2	128 ~ 138
150	150	4.2	132 ~ 142
168	168	4.2	150 ~ 160
170	170	4.2	152 ~ 162
186	186	4.2	168 ~ 178
202	202	4.2	184 ~ 194
205	205	4.2	187 ~ 197
223	223	4.2	205 ~ 215
226	226	4.2	208 ~ 218
235	235	4.2	217 ~ 227
242	242	4.2	224 ~ 234
249	249	4.2	231 ~ 241
283	283	4.2	265 ~ 275
300	300	4.2	282 ~ 292
350	350	4.2	332 ~ 342
450	450	4.2	432 ~ 442
550	550	4.2	532 ~ 542

Product no.	L	a	Matching boss pitch
FDR-B102	102	6.5	86 ~ 92
<b>NEW</b> B124	124	6.5	108 ~ 114
B142	142	6.5	126 ~ 132
B160	160	6.5	144 ~ 150
B165	165	6.5	149 ~ 155
B176	176	6.5	160 ~ 166
B183	183	6.5	167 ~ 173
B223	223	6.5	207 ~ 213
B260	260	6.5	244 ~ 250
B283	283	6.5	267 ~ 273
B303	303	6.5	287 ~ 293
B338	338	6.5	322 ~ 328
B360	360	6.5	344 ~ 350
B376	376	6.5	360 ~ 366
B383	383	6.5	367 ~ 373
B463	463	6.5	447 ~ 453
B560	560	6.5	544 ~ 550
B623	623	6.5	607 ~ 613
FDR-1000	1000	—	—

■ FDR-1000 does not have mounting holes.

Matching DIN-Rail Chart

BC□□ series

Product no.	Matching DIN-Rail
091207	FDR - 80
091208	80
101507	110
101508	110
112107	170
112110	170
112607	223
112610	223
BCAP	
BCPC	
BCPK	
BCAR	
BCPR	
131508	120
131808	150
131810	150
151509	120
151512	120
162110	170
162113	170
162610	223
162613	223
172211	170
172711	223

BDN series

Product no.	Matching DIN-Rail
6- 8- 5	FDR - 50
7-10- 4	-
9- 9- 6	FDR - 80
9-13- 5	120
10-14- 7	128
11-16- 6	150
12-22- 8	205
16-26- 9	242

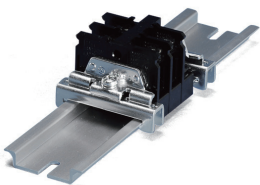
BCAS series

Product no.	Matching DIN-Rail
071005	FDR - 92
080806	66
081104	92
081107	92
081108	92
081110	92
081307	110
081308	110
081807	168
081808	168
082507	235
082508	235
101007	77
101010	77
101807	150
102007	170
102307	202
121207	80
121210	80
141709	146
142309	205
151507	120
151510	120
152004	170
152007	170
152010	170
152013	170
152016	170
152510	226
152513	226
161607	137

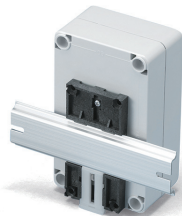
SPCM • SPCP series

Product no.	Matching DIN-Rail
081304	FDR - 50/100
081305	50/100
081306	50/100
081308	50/100
081310	50/100
081313	50/100
101004	80
101006	80
131304	100
131305	100
131306	100
131308	100
131310	100
131313	100
SPCM	
SPCP	
131804	100/150
131805	100/150
131806	100/150
131808	100/150
131810	100/150
131813	100/150
131815	100/150
181808	150
181810	150
181813	150
181815	150
182508	150/223
182510	150/223
182515	150/223

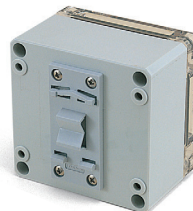
Accessories (Optional parts)



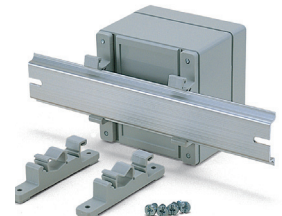
DIN-Rail stopper bracket TKR series  
See page DIN-ACC-2



DIN-Rail mounting base DRA series  
See page DIN-ACC-1



DIN-Rail mounting base DRT series  
See page DIN-ACC-1



DIN-Rail mounting feet CKD series  
See page DIN-ACC-2



**MAR** series

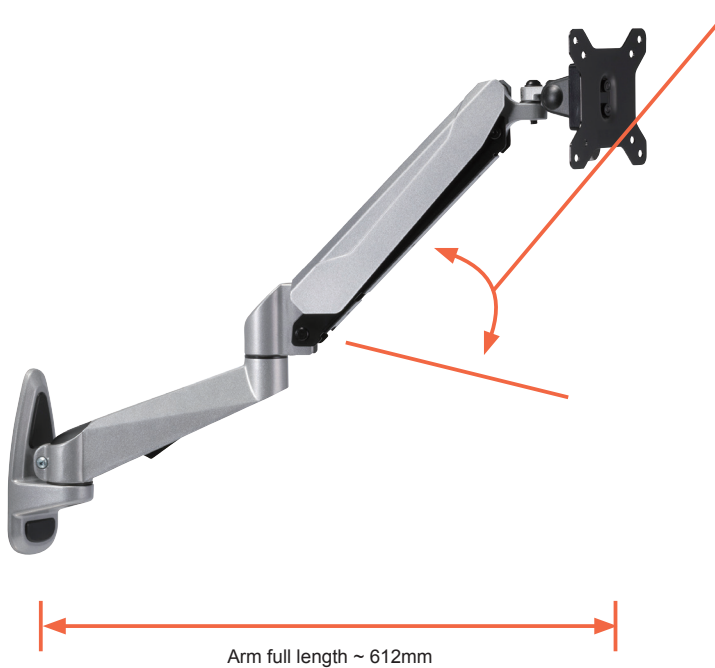
**WALL MOUNT SUPPORT ARM**



- Wall mount support arm move easily to the preferred positions.
- Suitable for command panel on machinery and touch panel controller. Easy installation onto the wall as well.
- Hole pitch on the monitor bracket is compatible with VESA mount standards. Possible to mount PC display without modification.

**MAR specifications**

**MAR-312W**

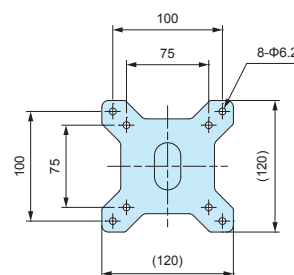


Arm can move up/down direction.

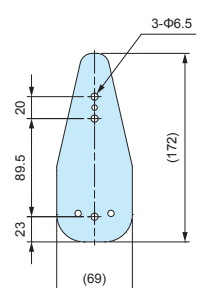


Adjustable bolt for up/down direction on arm is firmly set initially. Adjust the movement according to the installed device.

Pan-Tilt bracket dimensions



Wall mounting bracket dimensions

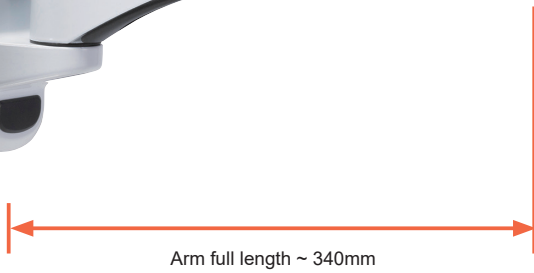
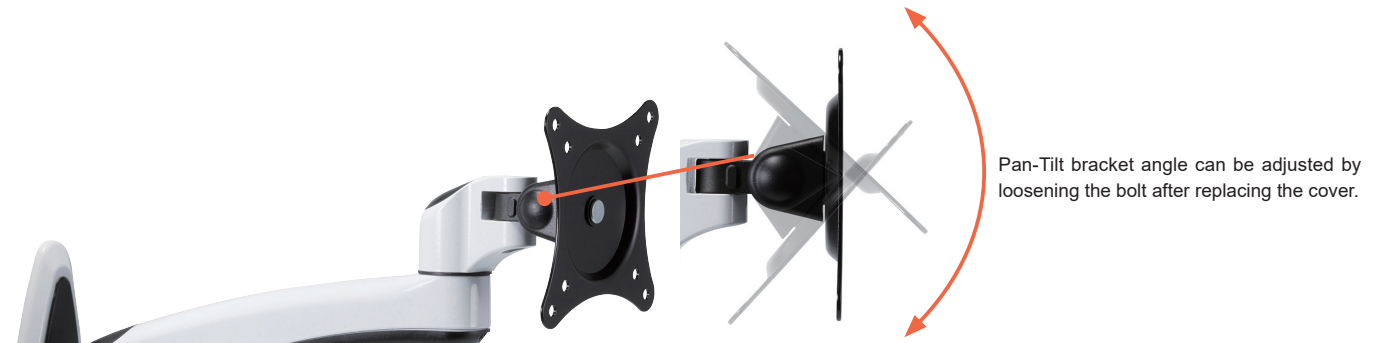


Max load : 6.5kg (including product weight, adjustable bolt firmly locked)

Material : Steel • Plastic • Aluminium diecast

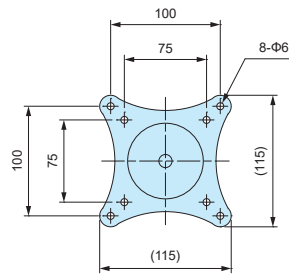
\*Wall mounting screws included.

**MAR-111W**

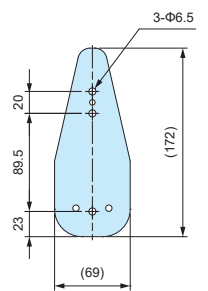


Max load : 8kg (including product weight)  
 Material : Steel • Plastic • Aluminium diecast  
 \*Wall mounting screws included.

Pan-Tilt bracket dimensions



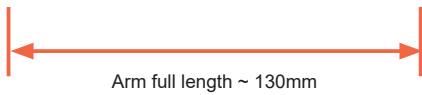
Wall mounting bracket dimensions



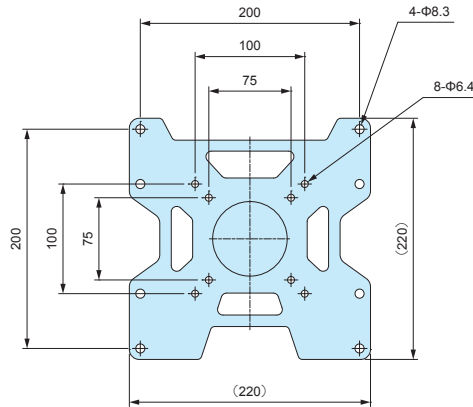
**MAR-110W**



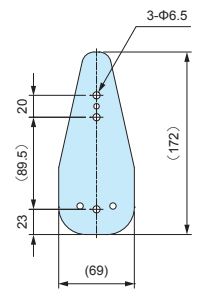
\*Pan-Tilt bracket do not move up/down direction.



Pan-Tilt bracket dimensions



Wall mounting bracket dimensions



Max load : 8kg (including product weight)  
 Material : Steel • Plastic • Aluminium diecast  
 \*Wall mounting screws included.

**Product no. / Dimensions**

Product no.	Arm full length	Arm color	Weight (kg)
MAR-312W	~ 612mm	Metallic gray	2.2
MAR-111W	~ 340mm	White / Black	1.0
MAR-110W	~ 130mm	White / Black	1.0