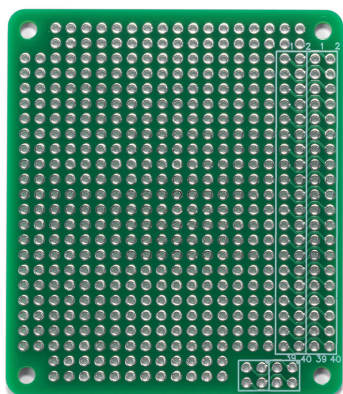
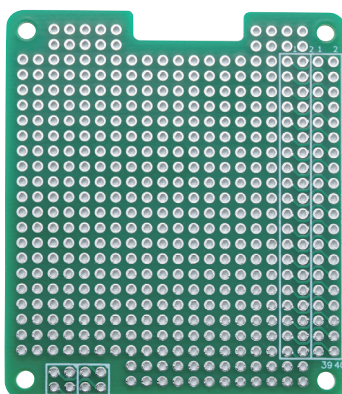


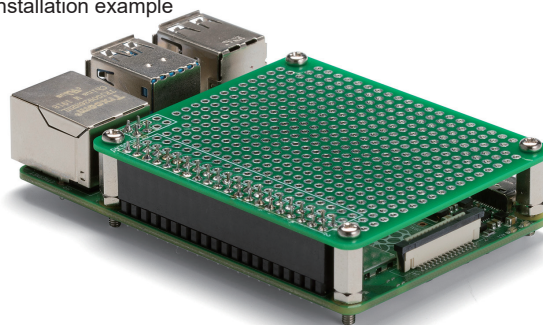
RPCB-4B



RPCB-5



Installation example



- Raspberry Pi Board is not included.
- Connector, spacer, and mounting screw set are sold separately.

■ Material / Finish : Glass epoxy (FR-4) / Through-hole - Lead-free solder resist

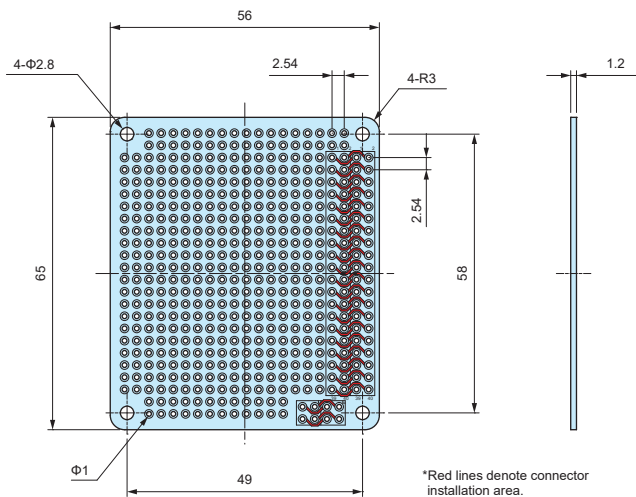
■ Expansion PCB for standard Raspberry Pi boards. Use to install expansion parts or components.

■ Environmentally friendly lead-free solder. RoHS3 compliant.

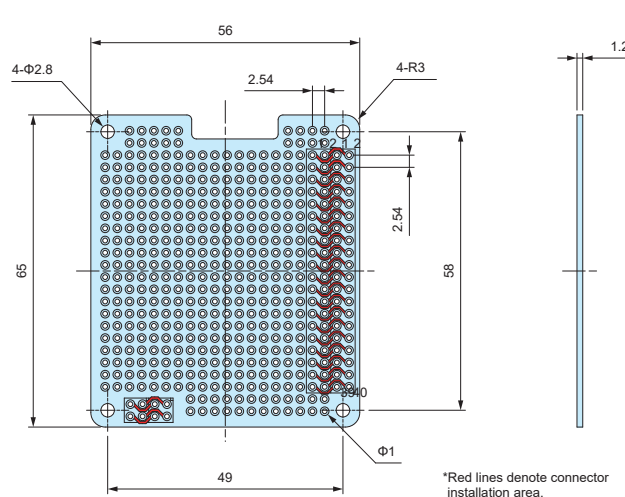
**RPCB dimensions**

■ DXF/DWG/PDF drawings available on our website.

RPCB-4B



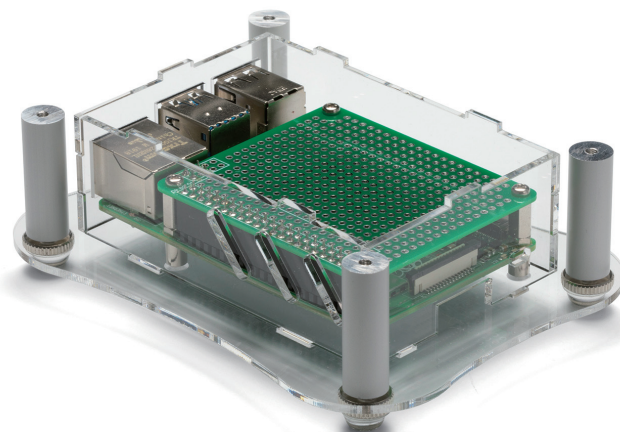
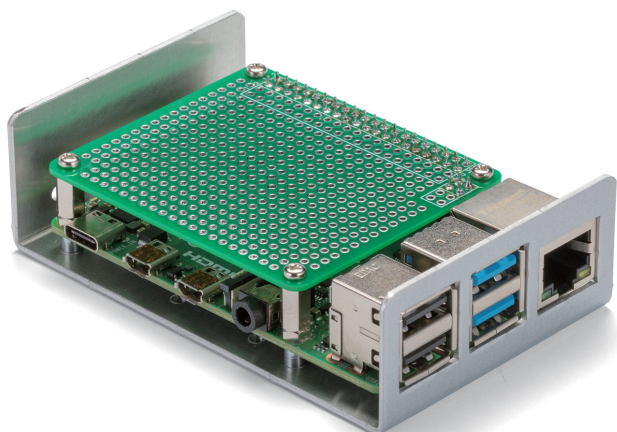
RPCB-5



**Product no. / Details**

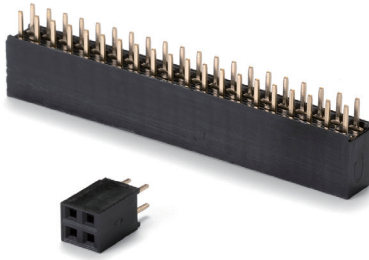
Product no.	Pack of	Suitable model
RPCB-4B	1	Raspberry Pi 4B
<b>NEW</b> RPCB-5	1	Raspberry Pi 5

■ Expansion PCB can also be utilized on RPI-4B and RPA series cases.



RPS series

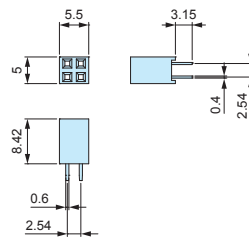
PIN SOCKET CONNECTOR for RPCB



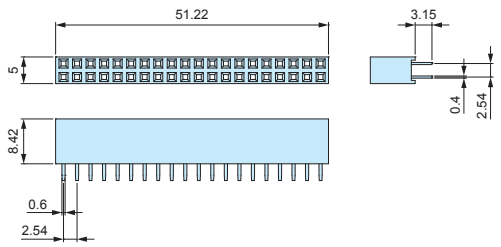
RPS dimensions

DXF/DWG/PDF drawings available on our website.

RPS2-2



RPS2-20



- Material / Color : (Socket) FRPBT UL94V-0 /Black • (Pin) Phosphor bronze
- 2.54mm hole-to-hole pitch pin socket connector. Utilize with RPCB expansion PCB for Raspberry Pi series.

Technical Data

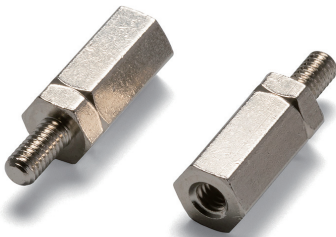
Operating temperature : -55°C ~ +105°C  
 Rated voltage : DC500V  
 Rated current : 1.0A

Product no. / Details

Product no.	Pin layout	Pack of
RPS2-2	4 (2 pin x 2)	1
RPS2-20	40 (20 pin x 2)	1

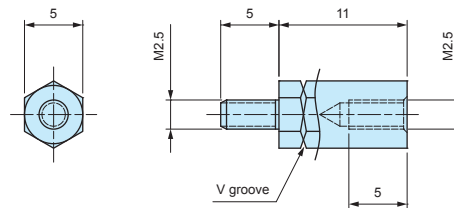
RPSP2.5-11

HEXAGONAL STANDOFF



RPSP2.5-11 dimensions

DXF/DWG/PDF drawings available on our website.



- Material / Finish : Brass / Nickel plated
- Brass hexagonal standoff with M2.5 threads on both male and female sides. Utilize with RPCB expansion PCB for Raspberry Pi series.

Product no. / Details

Product no.	Pack of
RPSP2.5-11	4

MT2.5-4

MOUNTING SCREW for RPSP2.5-11

MT2.5-4 dimensions



- Material / Finish : Steel / Trivalent chromate
- Utilize when affixing RPCB expansion PCB.

Product no. / Details

Product no.	Pack of
MT2.5-4	4