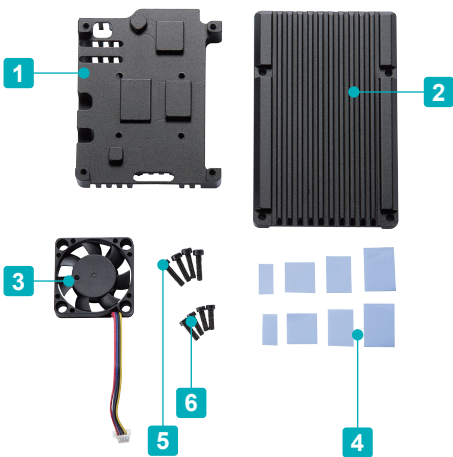
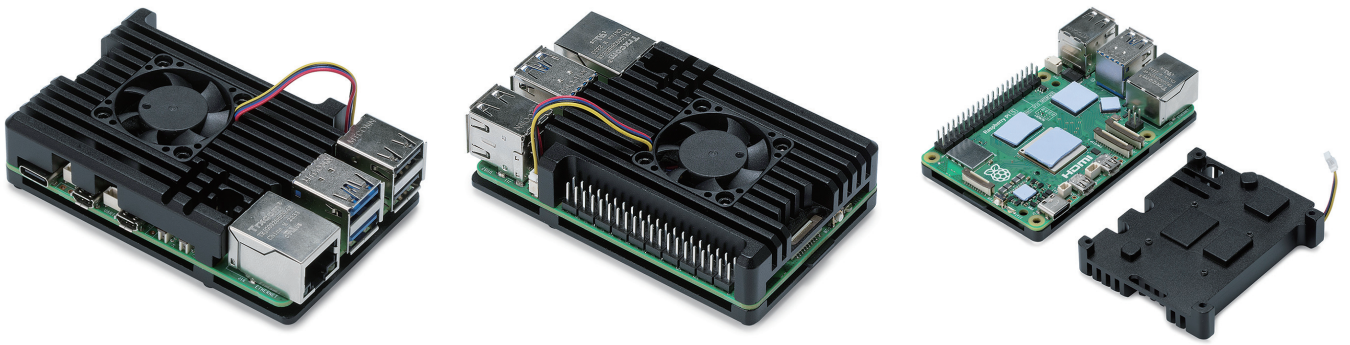


RPF-5 Raspberry Pi 5 HEATSINK CASE with COOLING FAN



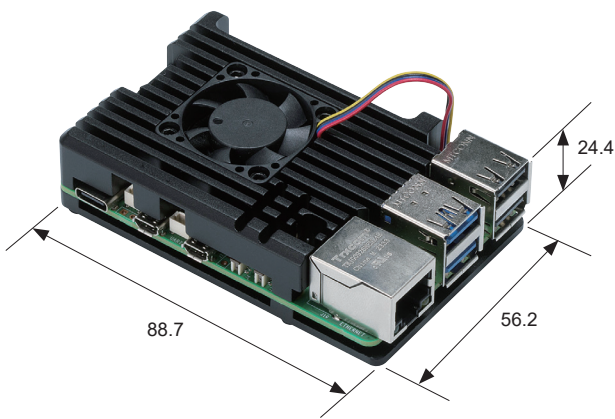
- Heatsink case with cooling fan for Raspberry Pi 5.
- Equipped with a highly efficient heat-sink top cover and thermal conductive sheets.
- Raspberry Pi board is not included.

Components

No.	Part name	Pcs	Material	Color / Finish
1	Cover	1	Aluminium	Black / Anodized
2	Base	1	Aluminium	Black / Anodized
3	Fan	1	Plastic	Black
4	Thermal conductive sheet	8*	Silicone	Blue
5	Screw	4	Steel	Black
6	Screw for fan	4	Steel	Black

*4 out of 8 pieces are spares.

RPF-5 dimensions



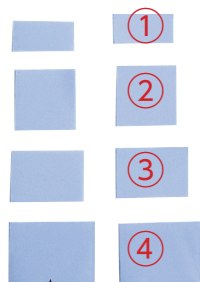
*Value above includes the dimensions of the PCB board.

Product no. / Details

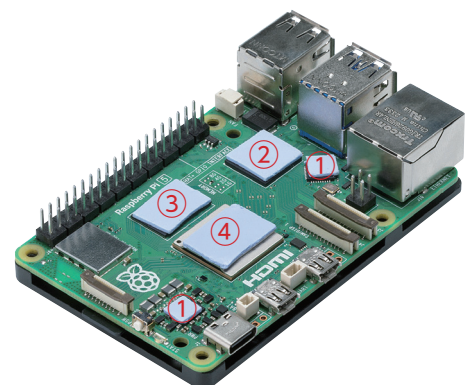
Product no.	Weight (g)
RPF-5	102.4

Where to paste the thermal conductive sheets.

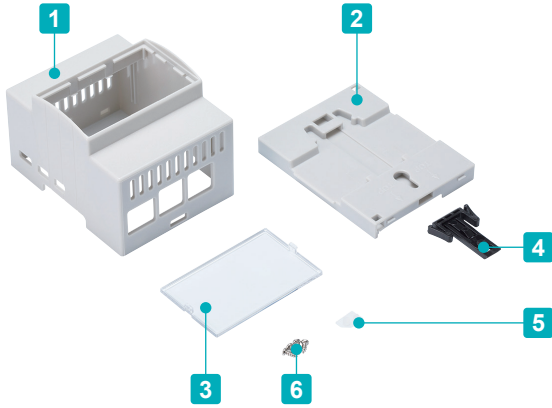
Cut ① to half before using.



4 spare sheets included.



RPDM-5 Raspberry Pi 5 DIN RAIL CASE



- DIN rail mount case exclusively for use with the Raspberry Pi 5. Able to assemble easily with a flathead screw driver; no screws required. *Caution : Material may easily break when assembling.

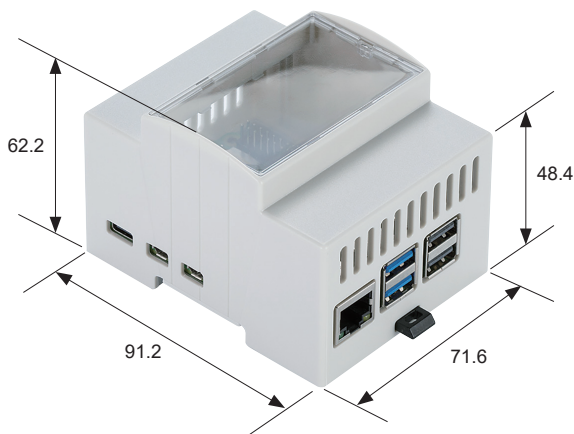
- Raspberry Pi board is not included.

Components

No.	Part name	Pcs	Material	Color / Finish
1	Body	1	ABS	Gray
2	Base	1	ABS	Gray
3	Front panel	1	ABS	Transparent
4	Lever	1	ABS	Black
5	Transparent window	1	Acrylic	Translucent
6	Screw for Board	4*	Steel	Silver

*2 out of 4 pieces are spares.

RPDM-5 dimensions



Product no. / Details

Product no.	Weight (g)
RPDM-5	63.7

Accessories (Optional parts)



DIN RAIL
FDR series
See page FDR-1 ~ FDR-2